

INVITATION TO BID

# Access Business Park Monument Signage

Project Site

**Access Business Park**  
(Highway 36 and Loop 322 Area)

Issued By

**Development Corporation of Abilene**

Pre-Bid Meeting

**July 13, 2026 | 1:00 pm**

**DCOA Office, 2<sup>nd</sup> Floor**  
**174 Cypress Street, Abilene, TX**

Bid Due Date

**July 24, 2026 by 5:00 pm**

Submission Email

**[Kevin.Lawrence@DevelopAbilene.com](mailto:Kevin.Lawrence@DevelopAbilene.com)**



Develop  
**Abilene**  
DEVELOPMENT CORPORATION  
OF ABILENE

## **Executive Summary**

### **Development Corporation of Abilene (DCOA)**

The DCOA is the economic development driver of Abilene with the mission to build the future Abilene by attracting and sustaining industries that support job creation and community prosperity.

Owning over 1,000 acres of land and more than 700,000 square feet of facilities, the DCOA leverages its real estate assets to secure company expansion projects. Learn more at [www.DevelopAbilene.com](http://www.DevelopAbilene.com).

### **Project Overview**

The Development Corporation of Abilene (DCOA) is seeking qualified contractors to build 3 separate monument signs at the Access Business Park (Highway 36 and Loop 322 area) in Abilene, Texas.

### **Bid Submissions**

At a minimum, all bids submitted must include the following:

- Completely filled out bid submission form.
- Current certificate of insurance meeting the requirements to bid.
- All costs associated with the construction based on the documents must be included.
- List of exclusions/assumptions and unit prices (if applicable).

## **Evaluation Criteria**

The successful bidder will be the bidder offering the most beneficial bid for the DCOA based on criteria including, but not limited to:

- Proposed project costs.
- History of contractor's quality and successful completion of previous comparable projects.
- Overall reputation.
- Financial capability compared to size and scope of the project.
- Any other criteria as determined by the DCOA used for the project.

## **Requirements to Bid**

- General Liability Insurance of at least \$1,000,000 per occurrence must be maintained throughout the contract. Development Corporation of Abilene shall be named as a certificate holder upon award of the contract.
- All employees of the contractor must have appropriate Personal Protective Equipment as deemed necessary.
- Contractor must have experience in similar projects.

## Scope of Work

### 1. Pre-Construction & Logistics

- Safety Plan: OSHA compliance, hazard assessment, and controlled access points.
- Permits & Approvals: Contractor to secure all necessary municipal permits and ensuring code compliance. Follow appropriate building codes for location.
- Tenant/Operational Coordination: Scheduling to minimize business disruption to existing business.
- Contractor shall verify all field conditions, quantities, and dimensions prior to bid submission. No additional compensation shall be granted for conditions that could reasonably have been discovered during the bid period.

### 2. Installer Qualifications

- Company specializing in performing work of this type or specialty, with at least 5 years of documented experience with projects of similar size and scope.

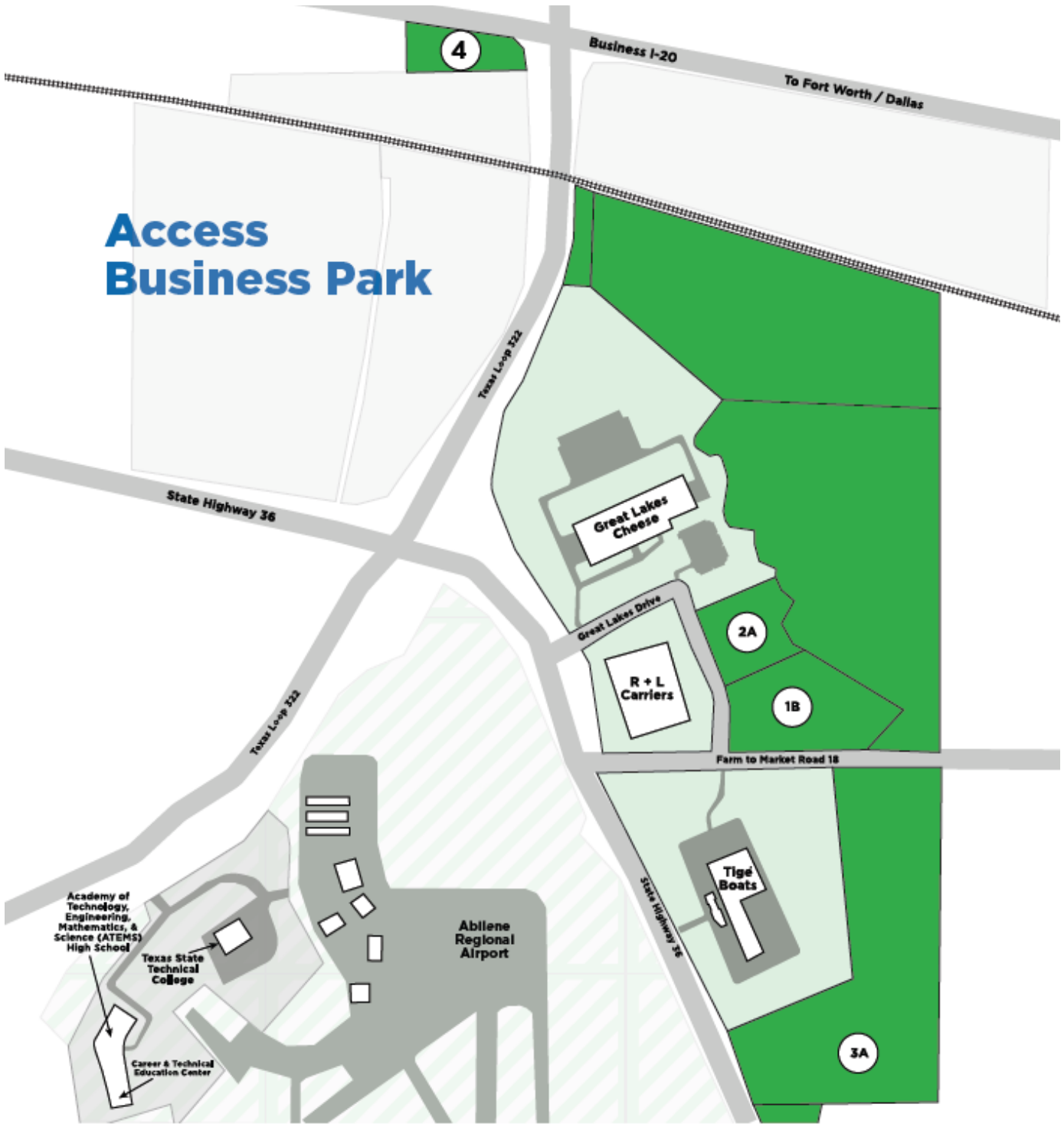
### 3. Pre-Bid Meeting

- A non-mandatory in-person meeting is scheduled on July 13, 2026, at 1:00 pm. The meeting will be held in the DCOA's 2<sup>nd</sup> Floor Board Room located at 174 Cypress Street.

### 4. Finalization

- Final inspection by the DCOA.
- Final site cleanup, including magnetic sweeping for nails, removal of debris, and site grading.
- Project is expected to be completed within 120 calendar days of award, unless specified in contractor's bid submission.

### 5. See attached for a map of Access Business Park (page 5)



# Access Business Park

Lot Number and Available Acreage	
1B	15.17 acres
2A	8.69 acres
3A	60.63 acres
4	6.93 acres

■ Available Lot   
 ■ Available Airport Land



174 Cypress Street  
 Abilene, Texas 79601  
 325.676.6390 | dcoa@abilenedcoa.com  
 DevelopAbileneTX.com



## Bid Form – Access Business Park Monument Signage

Project: Access Business Park, Abilene, TX

Owner: Development Corporation of Abilene (DCOA)

Bidder Company Name: \_\_\_\_\_

Contact Person: \_\_\_\_\_

Email: \_\_\_\_\_

Phone: \_\_\_\_\_

### Base Bid

Base Bid – Provide all material and labor to complete the project as outlined in the Access Business Park Signage Plans.

Base Bid Price: \$\_\_\_\_\_

### Schedule

Proposed duration from Notice to Proceed: \_\_\_\_\_ calendar days

### Acknowledgements

Bidder has verified all field conditions and quantities.

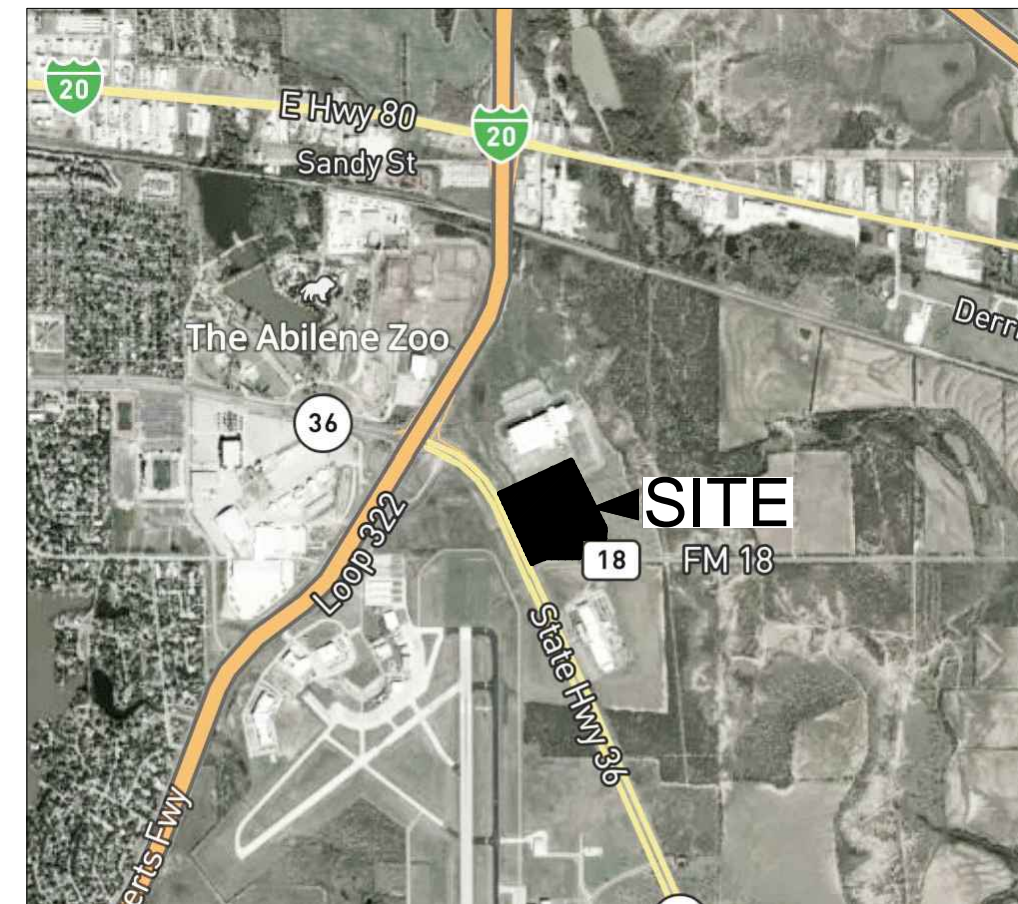
Bid includes entire scope described in the Invitation to Bid documents.

Authorized Signature: \_\_\_\_\_

Printed Name & Title: \_\_\_\_\_

Date: \_\_\_\_\_

# ACCESS BUSINESS PARK SIGNAGE PLANS HIGHWAY 36 AT F.M. 18 ABILENE, TEXAS



LOCATION MAP

## SHEET INDEX

- C0.0 COVER
- C1.0 SITE LOCATION PLAN
- C2.0 BUSINESS PARK MONUMENT SIGN
- C2.1 MONUMENT SIGN DETAILS DIRECTIONAL SIGN
- C3.0 IDENTIFICATION AND
- C4.0 BUSINESS PARK SIGNAGE ELECTRICAL
- C4.1 BUSINESS PARK LIGHTING SPECIFICATIONS
- C4.2 BUSINESS PARK LIGHTING SPECIFICATIONS



BUSINESS PARK MONUMENT SIGN



IDENTIFICATION AND DIRECTORY SIGN

COVER

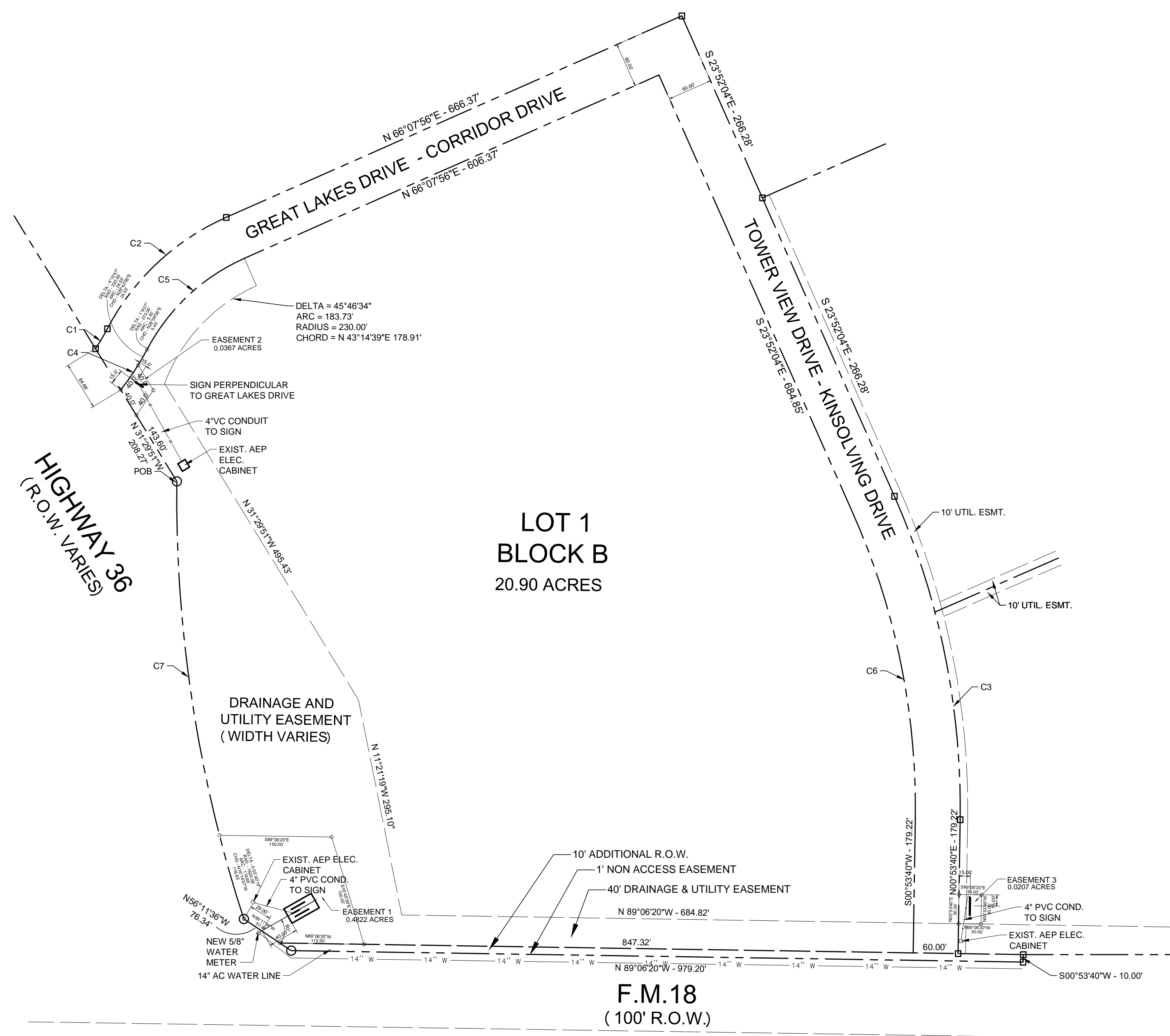
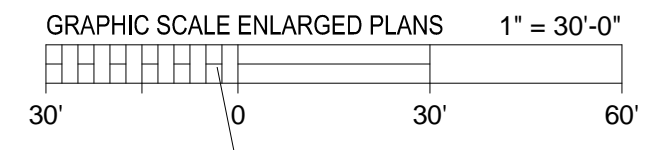
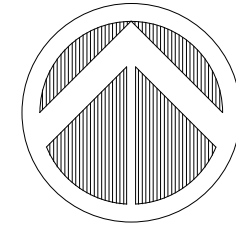
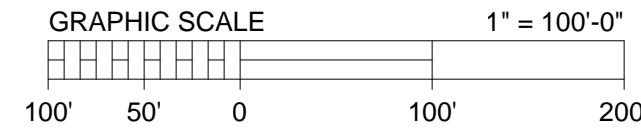
REV	DATE	BY	DESCRIPTION
0	06/12/2026	CDR	RELEASED FOR CONSTRUCTION

06/12/2026

**Rosenbaum Engineering, PLLC**  
 325.665.2915  
 2326 Wymndham Ct. | TBPE Registration #F-19243  
 Abilene, Texas 79606 | clint@rosenbaumeng.com  
 Clint Rosenbaum, P.E. |

**ACCESS BUSINESS PARK  
SIGNAGE PLANS**  
 HIGHWAY 36 AT F.M. 18  
 ABILENE, TEXAS

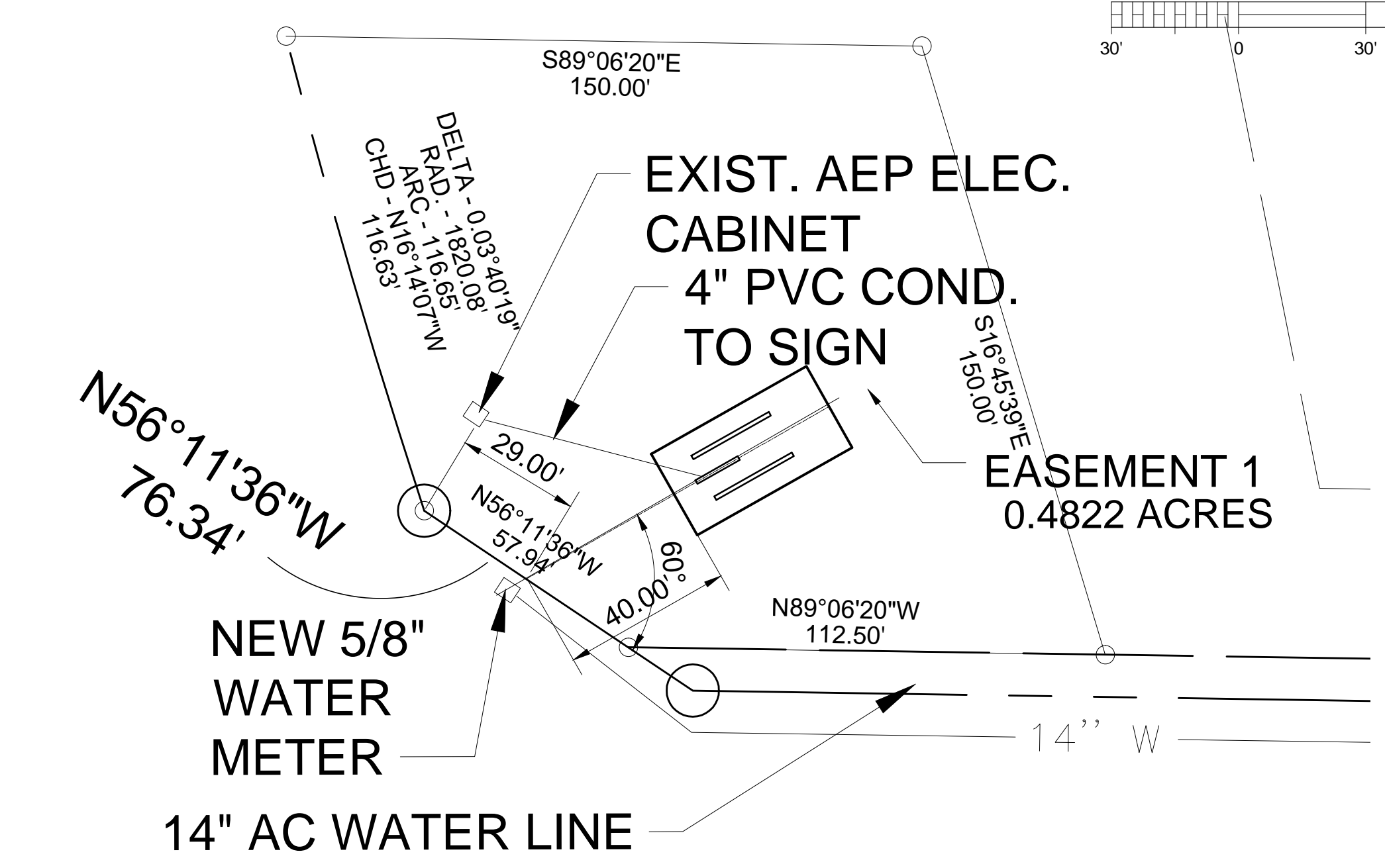
SHEET NO.  
**C0.0**



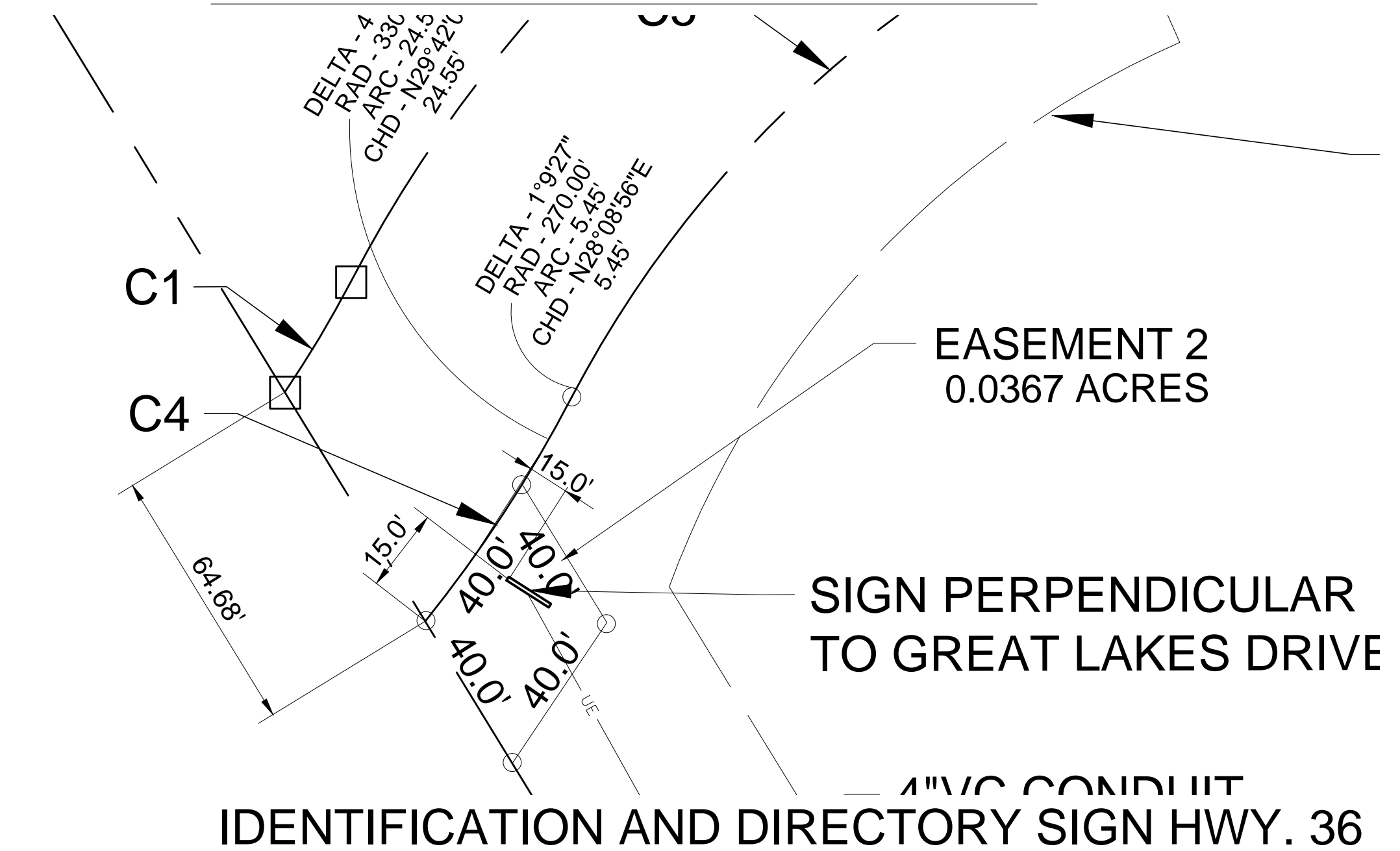
**CURVE TABLE**

CURVE	DELTA	ARC	RADIUS	CHORD
C1	6°34'34"	30.99'	270.00'	N30°51'29"E - 30.97'
C2	38°33'44"	222.10'	330.00'	S46°51'04"W - 217.93'
C3	24°45'44"	445.15'	1030.00'	N11°29'12"W - 441.69'
C4	11°12'44"	64.58'	330.00'	N33°10'34"E - 67.47'
C5	38°33'44"	181.72'	270.00'	S46°51'04"W - 178.31'
C6	24°45'44"	419.21'	970.00'	S11°29'12"E - 415.96'
C7	18°43'51"	585.01'	1820.08'	N08°42'21"W - 592.36'

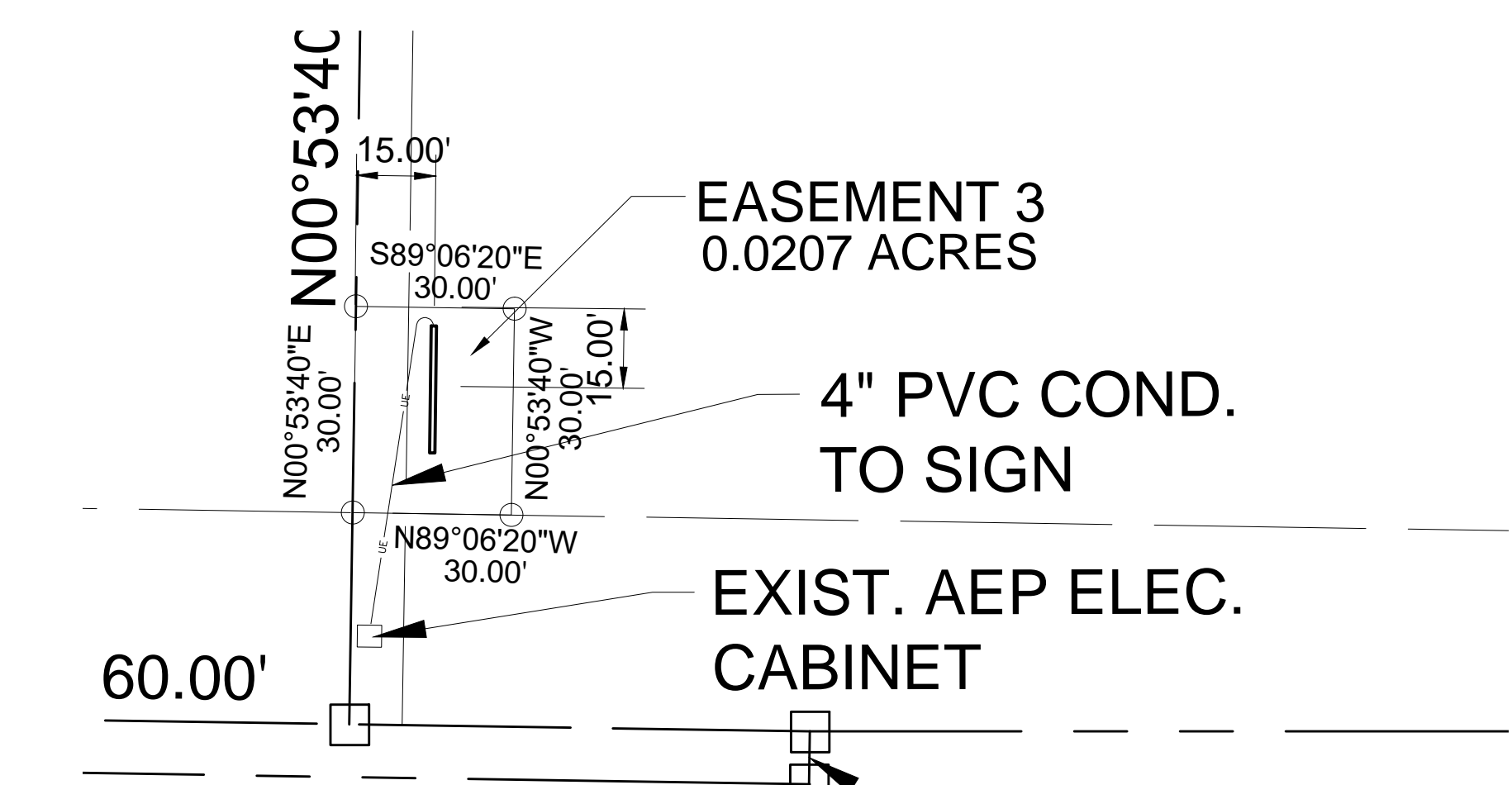
**OVERALL SIGNS PLAN**



**BUSINESS PARK MONUMENT SIGN**



**IDENTIFICATION AND DIRECTORY SIGN HWY. 36**



**IDENTIFICATION AND DIRECTORY SIGN F.M. 18  
SITE LOCATION PLANS**

REV	DATE	BY	DESCRIPTION
0	06/12/2026	CDR	RELEASED FOR CONSTRUCTION

SIGNED	CDR	BFT	CDR	CDR	DATE
					3/2026

06/12/2026

**Rosenbaum Engineering, PLLC**  
 325.665.2915  
 2326 Wymndham Ct.  
 Abilene, Texas 79606  
 Clint Rosenbaum, P.E. | clint@rosenbaumenr.com

**ACCESS BUSINESS PARK  
SIGNAGE PLANS**  
 HIGHWAY 36 AT F.M. 18  
 ABILENE, TEXAS

SHEET NO.  
**C1.0**

Q:\UTPL\Rosenbaum\Eng\POCA\SIGNAGE\SKANS-06102606.dwg

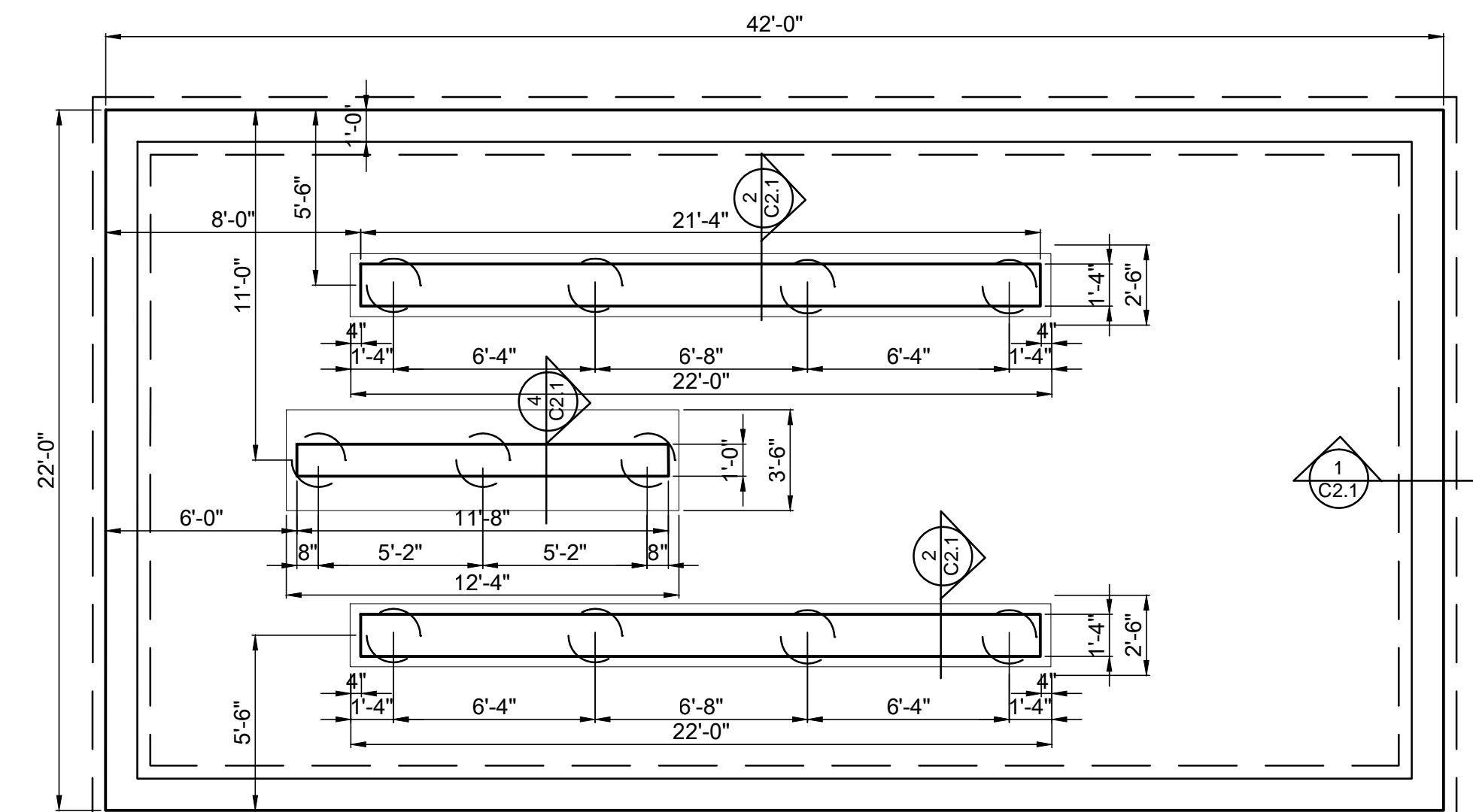
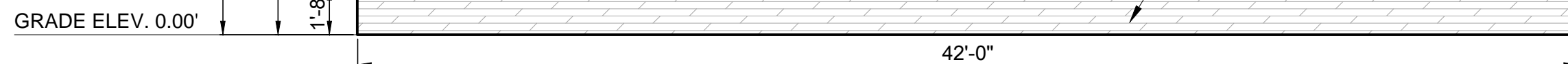
**KEY NOTES**

- 1 LEDGESTONE
- 2 STONE CAP
- 3 STUCCO
- 4 12" LETTERS (LETTER NOTE 2)
- 5 6" LETTERS (LETTER NOTE 3)
- 6 3 1/2" LETTERS (LETTER NOTE 3)
- 7 CORTEN PANEL EACH SIDE (DETAIL '3', SHEET C2.1)
- 8 BACK LIGHT FOR PANEL, (SEE SHEET C4.1)

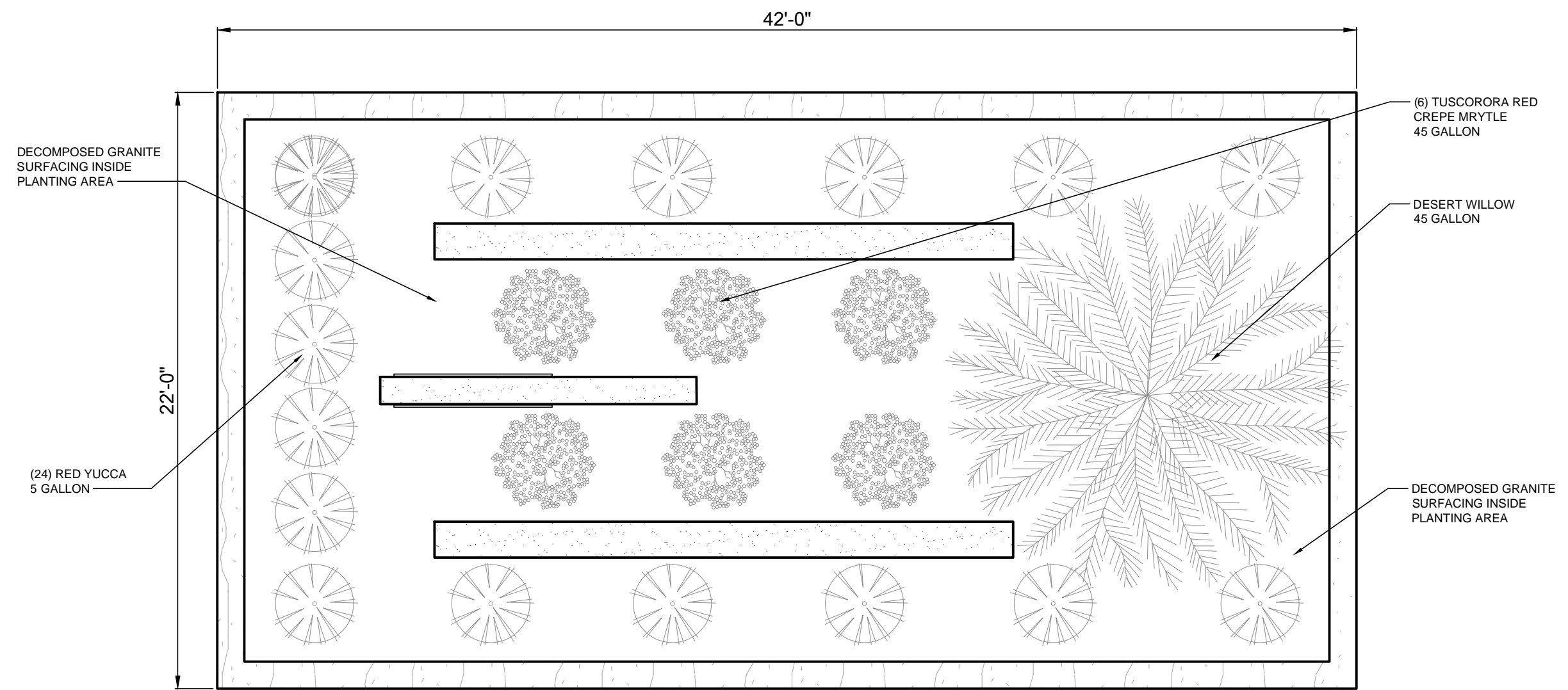
**NOTE**

CONTRACTOR TO PROVIDE A MOCK UP OF THE WALL PANELS WITH A SAMPLE OF THE CORTEN PANEL AND LETTERING.

**1 SIGN ELEVATION**



**2 SIGN PLAN DETAIL**



**3 LANDSCAPE PLAN**

**LANDSCAPE WORK**

- PROVIDE PLANTINGS AS NOTED.
- PROVIDE TREES, SHRUBS, AND OTHER PLANTS OF SIZE, GENUS, SPECIES, AND VARIETY SHOWN AND SCHEDULED FOR LANDSCAPE WORK AND COMPLYING WITH RECOMMENDATIONS AND REQUIREMENTS OF ANSI Z60.1 "AMERICAN STANDARD FOR NURSERY STOCK".
- FOR PLANTING BEDS LOOSEN SUBGRADE REMOVE STICKS, STONES, RUBBISH, AND OTHER EXTRANEIOUS MATTER.
- PROVIDE AND MINIMUM OF 6" OF TOPSOIL INSIDE WALL AREA.
- DIG BEDS TO DEPTHS AS NEEDED AND MIX WITH NEEDED SOIL AMENDMENTS AND FERTILIZERS. WORK IN PLANTING SOIL MIXTURE TO MINIMUM DEPTH REQUIRED TO MEET LINES, GRADES, AND ELEVATIONS.
- COVER SUBGRADE WITH GEO-TEXTILE FABRIC WEED BARRIER PRIOR TO PLACING PLANTINGS.
- COVER PLANTING BEDS WITH 3" OF DECOMPOSED GRANITE.
- WARRANTY PLANTINGS, FOR A PERIOD OF ONE YEAR AFTER DATE OF SUBSTANTIAL COMPLETION, AGAINST DEFECTS INCLUDING DEATH AND UNSATISFACTORY GROWTH, EXCEPT FOR DEFECTS RESULTING FROM NEGLIGENCE, ABUSE OR DAMAGE BY OTHERS, OR UNUSUAL PHENOMENA OR INCIDENTS WHICH ARE BEYOND LANDSCAPE INSTALLER'S CONTROL.

**IRRIGATION SYSTEM**

- PROVIDE DRIP IRRIGATION FOR ALL PLANTINGS.
- THE CONTRACTOR SHALL PROVIDE A COMPLETE SYSTEM DESIGN THAT MEETS CODE REQUIREMENTS AND THE WATER PRESSURE AVAILABLE AT THE SITE.
- THE CONTRACTOR IS RESPONSIBLE FOR COORDINATING THE INSTALLATION OF THE WATER METER AND BRINGING THE WATERLINE TO THE PLANTING BED. THERE IS AN EXISTING 14" WATER MAIN APPROXIMATELY 25' INTO THE RIGHT OF WAY IN FRONT OF THE EASEMENT. ASSUME A 5/8" WATER METER AND A 1" PVC SUPPLY LINE.
- COORDINATE LOCATION OF SLEEVES UNDER THE EXTERIOR WALL.
- LOCATE THE CONTROLLER AS SHOWN ON THE ELECTRICAL DRAWING.
- PERFORM OPERATIONAL TESTING AFTER HYDROSTATIC TESTING IS COMPLETED, BACKFILL IS IN PLACE. DEMONSTRATE THAT SYSTEM MEETS COVERAGE REQUIREMENTS AND THAT AUTOMATIC CONTROLS FUNCTION PROPERLY.

**GENERAL NOTES**

- THIS PROJECT IS THE CONSTRUCTION OF PARK AND LOCAL SIGNAGE AT THE ACCESS BUSINESS PARK IN ABILENE, TEXAS.
- IT IS THE INTENT OF THESE DRAWINGS THAT THE WORK BE COMPLETE IN EVERY RESPECT. ALL ITEMS OF LABOR, MATERIAL, OR EQUIPMENT NOT SPECIFICALLY STATED IN DETAIL BUT INCIDENTAL TO OR NECESSARY FOR THE COMPLETE INSTALLATION AND PROPER OPERATION OF ALL PHASES OF THE WORK DESCRIBED HERE IN SHALL BE PROVIDED.
- THE CONTRACTOR SHALL SECURE ALL PERMITS OR APPLICATIONS AND PAY ANY AND ALL FEES AS REQUIRED.
- THE CONTRACTOR SHALL VERIFY ALL DIMENSIONS AND CONDITIONS AT THE SITE BEFORE COMMENCING ANY PHASE OF THE WORK. ADJUSTMENTS FOR FIT AND COORDINATION SHALL BE MADE AT NO ADDITIONAL COST. COORDINATE ANY ADJUSTMENTS WITH THE DCOA REPRESENTATIVE.
- THIS PROJECT SHALL MEET ALL REQUIREMENTS OF THE 2021 INTERNATIONAL BUILDING CODE.
- CONTRACTOR SHALL ASSUME RESPONSIBILITY FOR ALL SAFETY PROCEDURES AND REQUIREMENTS NEEDED TO AVOID ANY AND ALL OVERHEAD HAZARDS OR UNDERGROUND UTILITIES DURING CONSTRUCTION.
- THE CONTRACTOR IS TO SUBMIT SAMPLES OF ALL ROCK, STUCCO, LETTERING, CORTEN PANEL, ETC. TO THE DCOA FOR APPROVAL PRIOR TO MOBILIZATION TO THE SITE.
- CONTRACTOR SHALL PROVIDE MOCKUPS OF THE ABOVE SELECTED COMPONENTS FOR DCOA APPROVAL.

**SITE CONSTRUCTION AREA**

- THE SIGN CONSTRUCTION AREAS ARE AT THE MAIN ENTRANCES TO THE BUSINESS PARK. THE SITES SHOULD BE MAINTAINED IN A CLEAN AND ORDERLY MANNER AT ALL TIMES. CLEAN THE JOBSITE DAILY AND REMOVE FROM THE PREMISES ANY DIRT AND DEBRIS CAUSED BY THE WORK. ANY DEBRIS, SILT, CONSTRUCTION RUBBLE OR ANY OTHER MATERIAL SPILLED ON THE SURROUNDING STREETS SHALL BE IMMEDIATELY CLEANED UP AND REMOVED.
- ANY CONSTRUCTION DEBRIS SHALL BE REMOVED FROM THE SITE WITHIN 48 HOURS.
- CONTRACTOR SHALL PROVIDE A TEMPORARY FENCE OR OTHER OBSTACLES AS NEEDED TO PREVENT THE PUBLIC FROM ENTERING THE SITE.
- CONTRACTOR SHALL PROVIDE SILT FENCE, HAY BALES, GRAVEL AREAS OR OTHER EROSION CONTROL MEASURES AS NEEDED TO PREVENT SEDIMENT AND SOILS RUNOFF FROM ENTERING THE STREET DRAINAGE AREAS.
- THE CONTRACTOR IS TO SUBMIT SAMPLES OF ALL ROCK, STUCCO, LETTERING, CORTEN PANEL, ETC. TO THE DCOA FOR APPROVAL PRIOR TO MOBILIZATION TO THE SITE.

**DRILLED PIERS**

- ALL DRILLED PIERS SHOULD BE CONSTRUCTED PER ACI 308.1 "STANDARD SPECIFICATION FOR THE CONSTRUCTION OF DRILLED PIERS."
- FOR A GIVEN PIER, EXCAVATION, STEEL REINFORCEMENT, AND CONCRETE PLACEMENT SHOULD BE COMPLETED WITHIN THE SAME DAY.
- PLACE CONCRETE CONTINUOUSLY AND IN A SMOOTH FLOW WITHOUT SEGREGATING. PROVIDE MECHANICAL VIBRATION FOR CONSOLIDATION OF AT LEAST THE TOP 10' OF EACH SHAFT.
- CONCRETE SHALL BE OF A MIX DESIGN TO HAVE A 28-DAY COMPRESSIVE STRENGTH OF 3,000 PSI. CONCRETE PLACED IN DRILLED PIERS SHOULD NOT BE PLACED AT SLUMPS LESS THAN 6 INCHES UNLESS IT IS CONSOLIDATED FULL DEPTH WITH A VIBRATOR OR BY OTHER MEANS.
- REINFORCING STEEL SHALL CONFORM TO ASTM A615 GRADE 60.
- LAP SPICES SHALL BE 15" FOR #3'S, 30" FOR #6'S AND 35" FOR #7'S.

**CONCRETE**

- CONCRETE BATCHING, MIXING, PLACING, HANDLING, TESTING, ETC. SHALL COMPLY WITH ACI 301 AND 318.
- ALL CONCRETE SHALL HAVE A MINIMUM COMPRESSIVE STRENGTH OF 3,500 PSI IN 28 DAYS AND DESIGNED TO HAVE A SLUMP IN THE RANGE OF 3 TO 5 INCHES.
- FRESHLY PLACED CONCRETE SHALL BE PROTECTED FROM PREMATURE DRYING BY UTILIZING A CURING AND SEALING COMPOUND, BY MOISTURE-RETAINING CURING OR A COMBINATION THERE OF.
- CONCRETE PLACED IN HOT WEATHER SHALL BE PLACED PER ACI 305 AND COLD WEATHER ACI 306.
- REINFORCING SHALL BE ASTM A-615 GRADE 60.
- REINFORCING LAP SPICES SHALL BE MINIMUM OF 40 BAR DIAMETERS.

**CONCRETE TESTING**

- ALL CONCRETE TESTING SHALL BE PERFORMED BY AN INDEPENDENT TESTING LABORATORY EMPLOYED BY THE CONTRACTOR.
- A COMPRESSION STRENGTH TEST SHALL BE MADE FOR EACH DAYS POUR EXCEEDING 8 YARDS. A COMPRESSION STRENGTH TEST SHALL CONSIST OF FOUR CYLINDERS, WITH ONE TESTED AT SEVEN DAYS AND TWO TESTED AT 28 DAYS, ONE SHALL BE HELD IN RESERVE FOR LATER TESTING IF NEEDED.
- CONCRETE SHALL BE SLUMP TESTED IN ACCORDANCE WITH ASTM C143 AT THE SAME FREQUENCY AS FOR CONCRETE STRENGTH TESTING.
- CONCRETE SHALL BE TESTED FOR AIR CONTENT IN ACCORDANCE WITH ASTM C173 AT THE SAME FREQUENCY AS FOR CONCRETE STRENGTH TESTING.

**MASONRY**

- MASONRY IS TO RECEIVE A STUCCO FINISH. IT IS ACCEPTABLE TO STRICK JOINTS FLUSH.
- MASONRY UNITS SHALL BE NORMAL WEIGHT CONFORMING TO ASTM C90.
- REINFORCING SHALL CONFORM TO GRADE 60.
- LADDER REINFORCING SHALL BE GALVANIZED STEEL WIRE WITH MINIMUM GAGE 9 AND PERPENDICULAR CROSS RODS SPACED NOT MORE THAN 16" ON CENTER.
- MORTAR SHALL COMPLY WITH ASTM C270.
- GROUT SHALL COMPLY WITH ASTM C476.
- CONSTRUCTION SHALL NOT EXCEED 14" IN 10' FROM PLUMB, 1/4" IN 20' FROM LEVEL AND LINEAR BUILDING LINE NOT MORE THAN 1/2" IN 20'.

**STUCCO**

- TINTING OF FINISH COAT SHALL BE A SLANT BLUE FOR MAIN SIGN PANEL AND BEIGE FOR DCOA PANEL. COLORS SHALL BE AS SELECTED BY THE DCOA FROM STANDARD COLOR OPTIONS.
- FINISH SHALL BE SMOOTH.
- SHALL BE TWO COAT PORTLAND CEMENT WITH A 3/8" TO 5/8" BROWN COAT AND FINISH COAT.
- METAL LATH TO BE 3.4 LB/YD EXPANDED METAL GALVANIZED STEEL COMPLYING WITH ASTM C847.

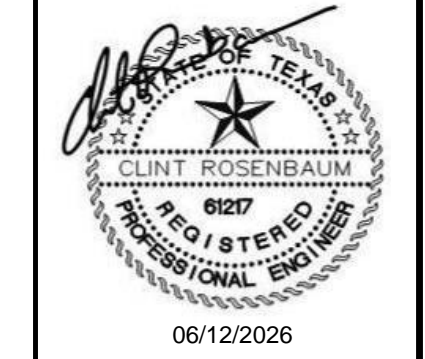
**LEDGESTONE ROCK**

- ROCK SHALL BE IN RANDOM UNITS.
- ROCK SHALL BE TIED TO THE CMU BACK AT ONE PER 4.5 SF.
- CONTRACTOR SHALL PROVIDE SAMPLES OF THE PROPOSED ROCK FOR APPROVAL.

**LETTERING**

- LETTERING SHALL BE GOTHAM BOLD OR MONTSERRAT BOLD CONFORMING TO THE DCOA IDENTITY GUIDELINES.
- ACCESS BUSINESS PARK LETTERING SHALL BE BACK LITE STAINLESS-STEEL LETTERS.
- DCOA LETTERS ON THE BUSINESS PARK MONUMENT SIGN SHALL BE BACK LITE WHITE OR OFF-WHITE AS SELECTED FROM THE MANUFACTURERS STANDARD LETTER COLORS.
- BUSINESS LETTERING ON THE IDENTIFICATION SIGN SHALL BE WHITE OR OFF-WHITE AS SELECTED FROM THE MANUFACTURERS STANDARD LETTER COLORS. BULLET FOR BUSINESS LETTERING SHALL BE BROWN TO MATCH THE CORTEN PANEL. ESTIMATE 4 BULLETS AND 64 LETTERS.
- ALL LETTERING SHALL BE SUBMITTED TO THE DCOA FOR APPROVAL.

REV	DATE	BY	DESCRIPTION
0	06/12/2026	CDR	RELEASED FOR CONSTRUCTION



**Rosenbaum Engineering, PLLC**  
 2326 Wyncham Ct.  
 Abilene, Texas 79606  
 Clint Rosenbaum, P.E. | clint@rosenbaumenr.com  
 325.666.2915  
 TBPE Registration #F-19243

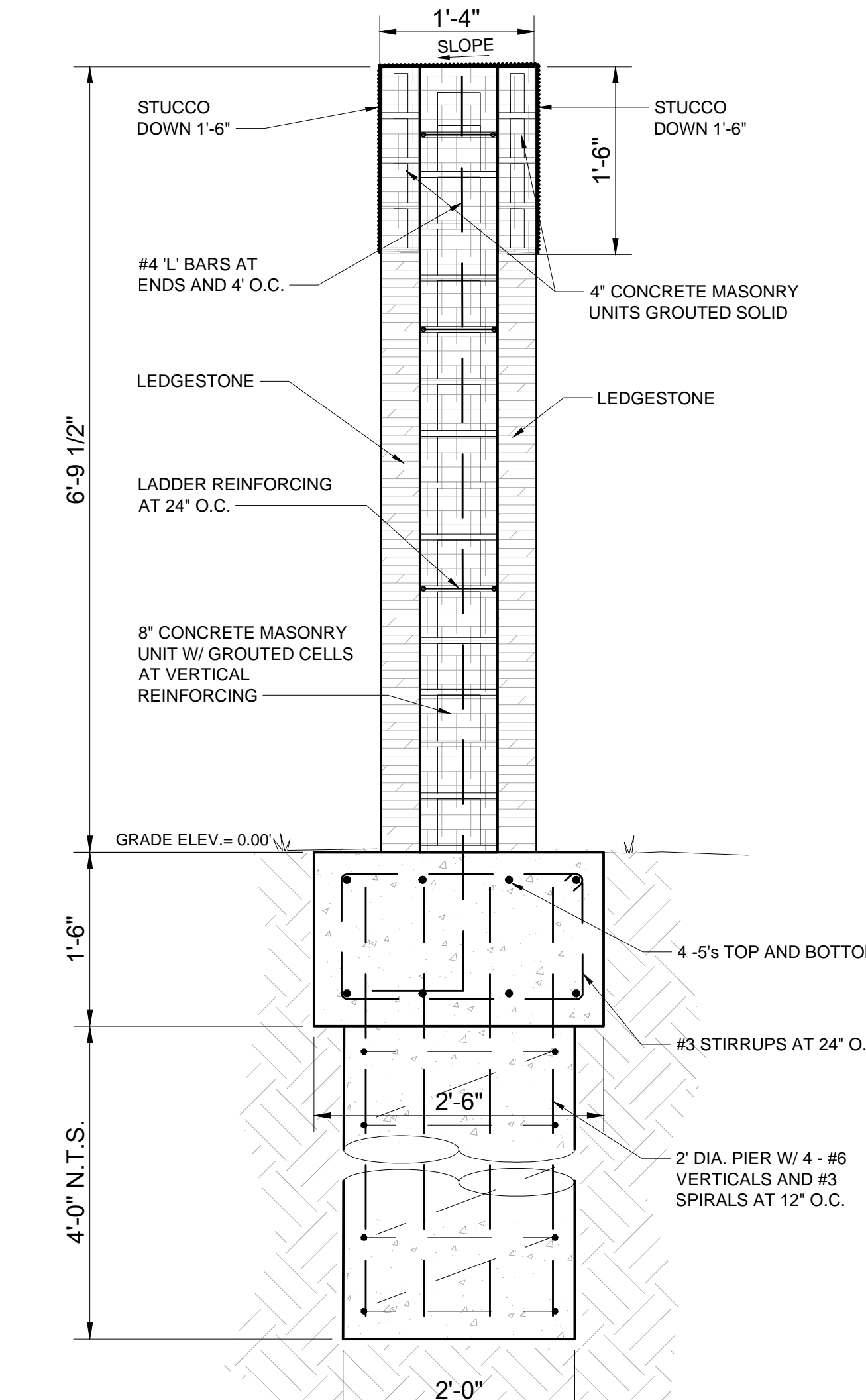
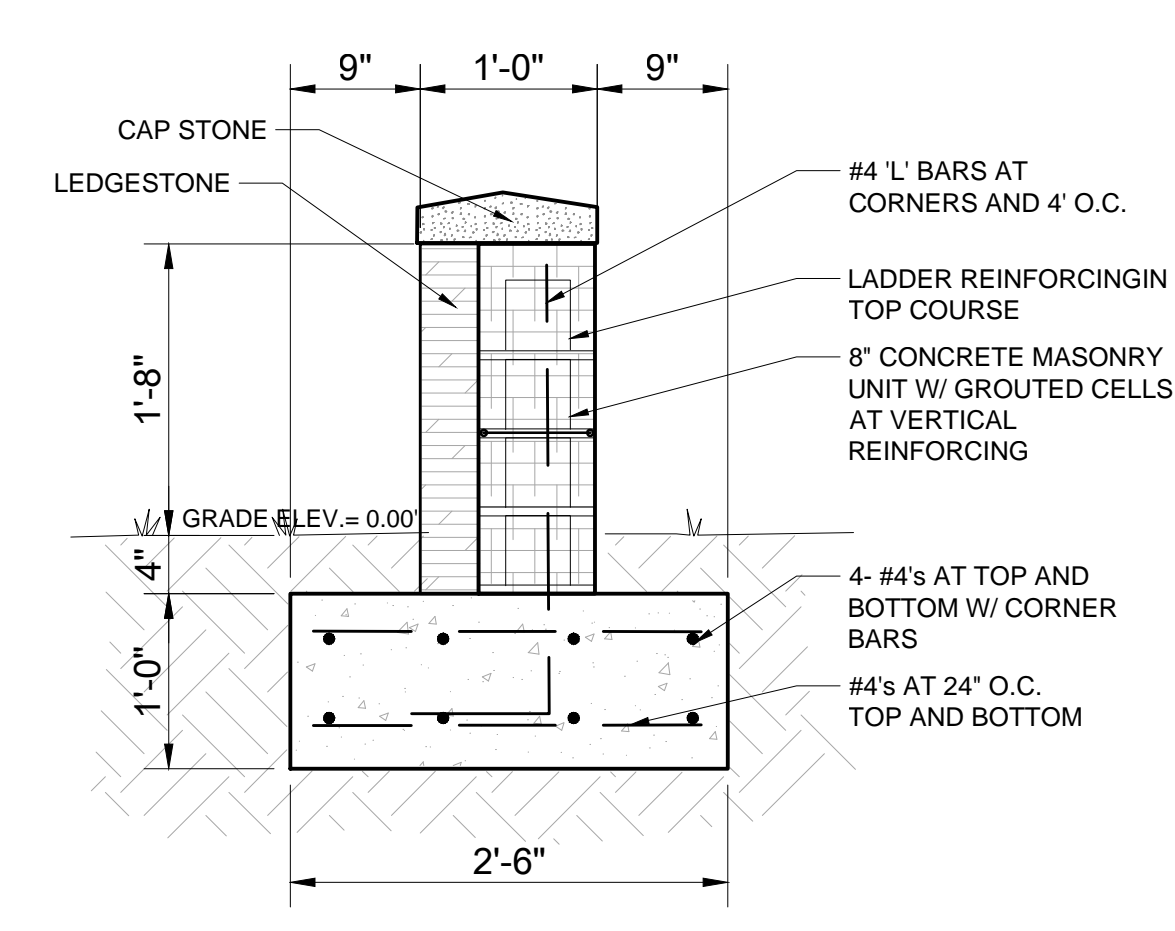
**ACCESS BUSINESS PARK  
 SIGNAGE PLANS  
 HIGHWAY 36 AT F.M. 18  
 ABILENE, TEXAS**

SHEET NO.  
**C2.0**

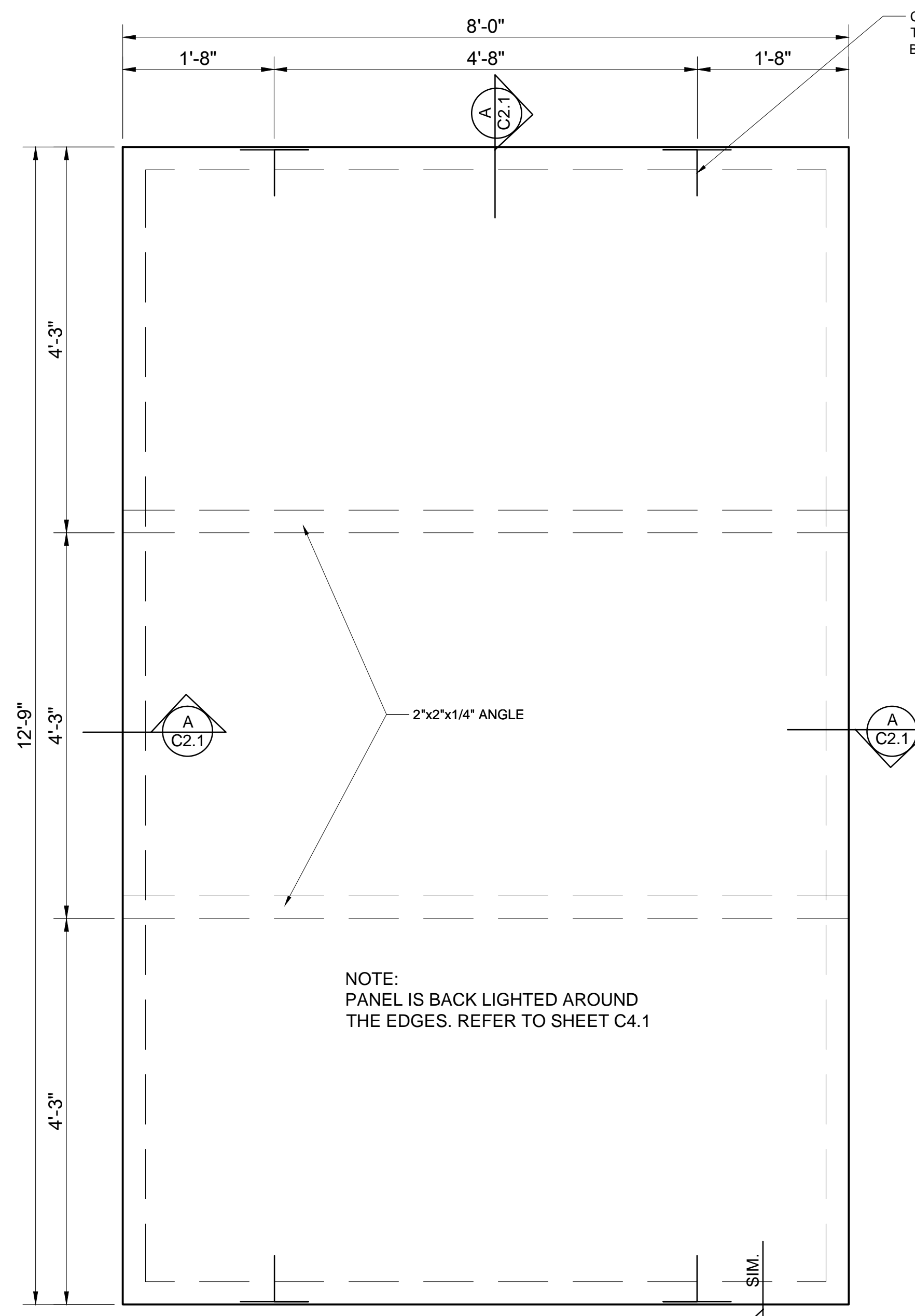
**BUSINESS PARK MONUMENT SIGN DETAILS**

Q:\UTL\Rosenbaum\DCOA SIGNAGE\DCOA SIGNAGE.dwg

**1**  
C2.1 MONUMENT SIGN CURB DETAIL

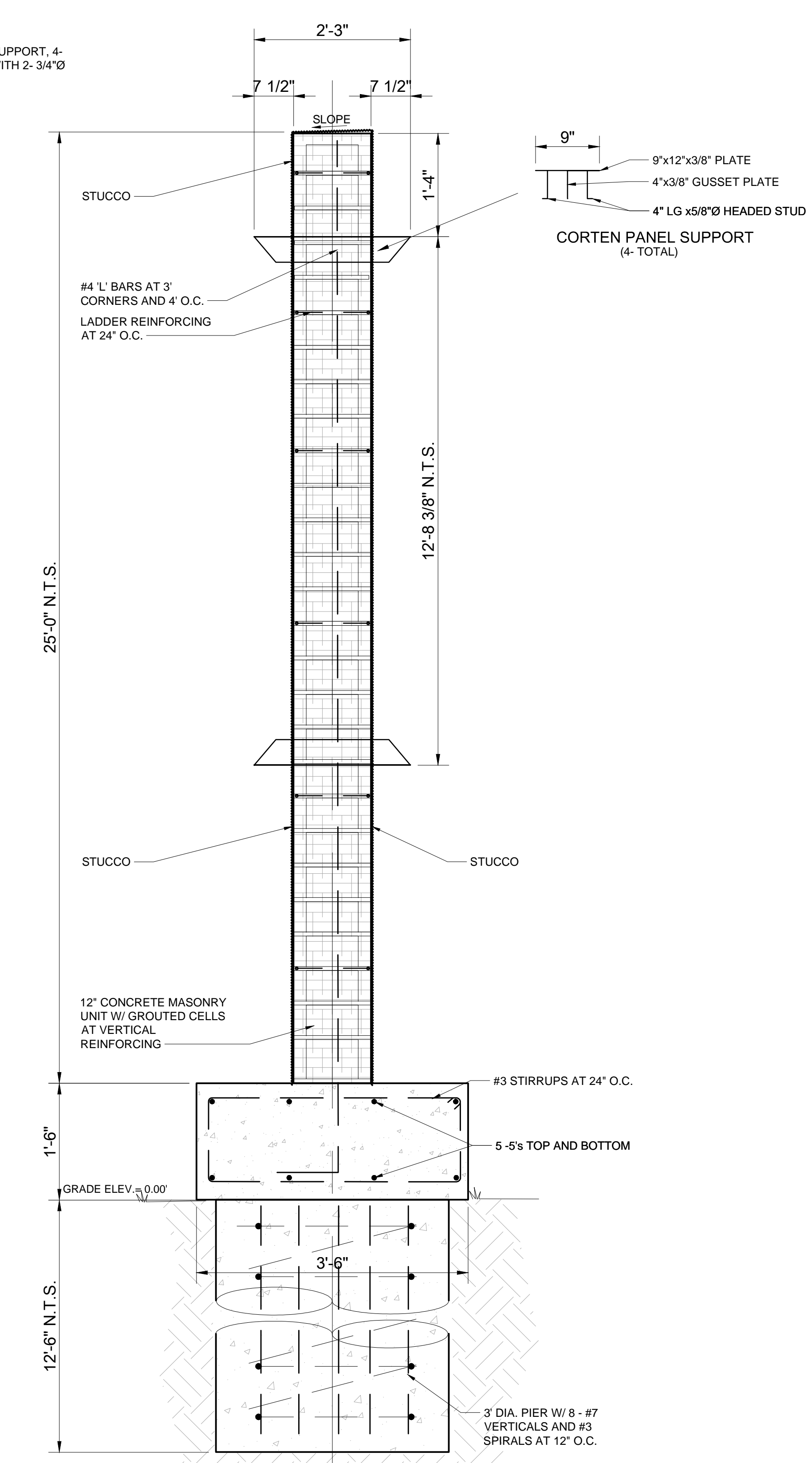
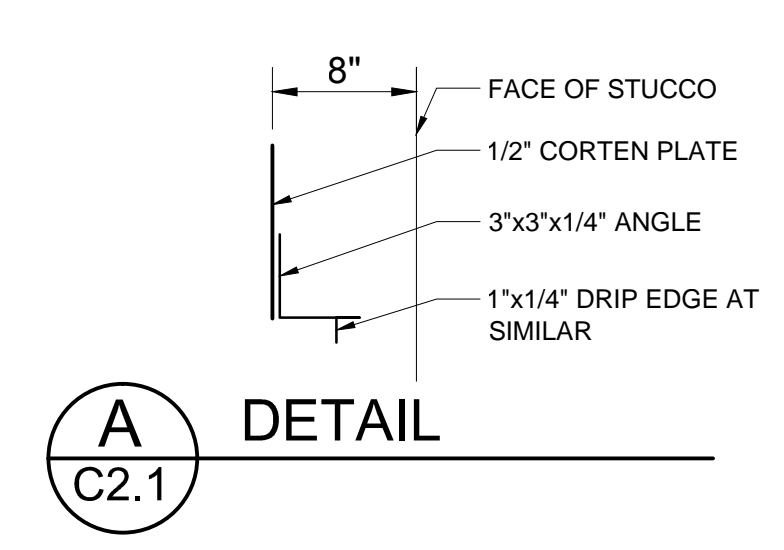


**2**  
C2.1 MONUMENT SIGN WALL DETAIL



NOTE: PROVIDE STEEL SHIMS AT SUPPORTS AT NEEDED.

**3**  
C2.1 CORTEN PANEL EACH SIDE



**4**  
C2.1 MONUMENT SIGN DETAIL

MONUMENT SIGN DETAILS

REV	DATE	BY	DESCRIPTION
0	06/12/2026	CDR	RELEASED FOR CONSTRUCTION

DESIGNED	CDR	BFT	CDR	CDR	DATE
					3/2026

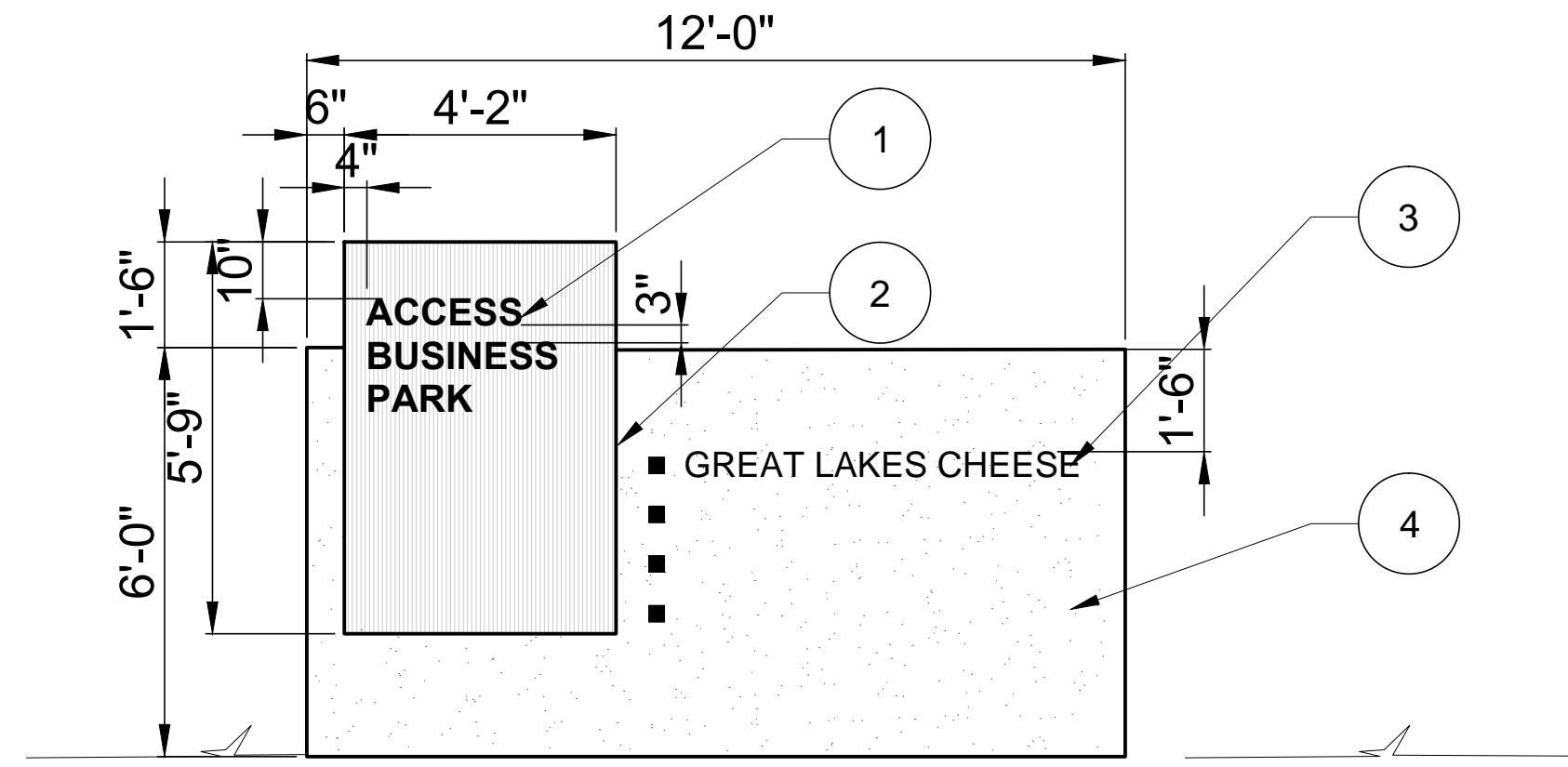
  

06/12/2026

**Rosenbaum Engineering, PLLC**  
 325.665.2915  
 2326 Wyncham Ct.  
 Abilene, Texas 79606  
 Clint Rosenbaum, P.E. | clint@rosenbaumenr.com

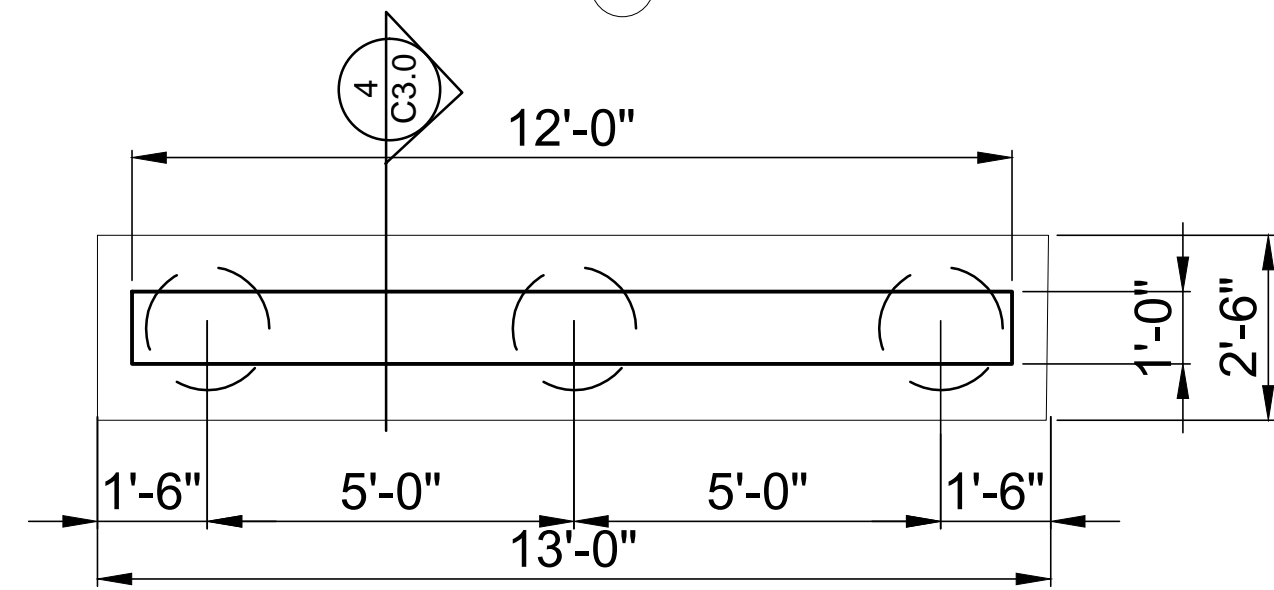
**ACCESS BUSINESS PARK  
SIGNAGE PLANS**  
 HIGHWAY 36 AT F.M. 18  
 ABILENE, TEXAS

SHEET NO.  
**C2.1**

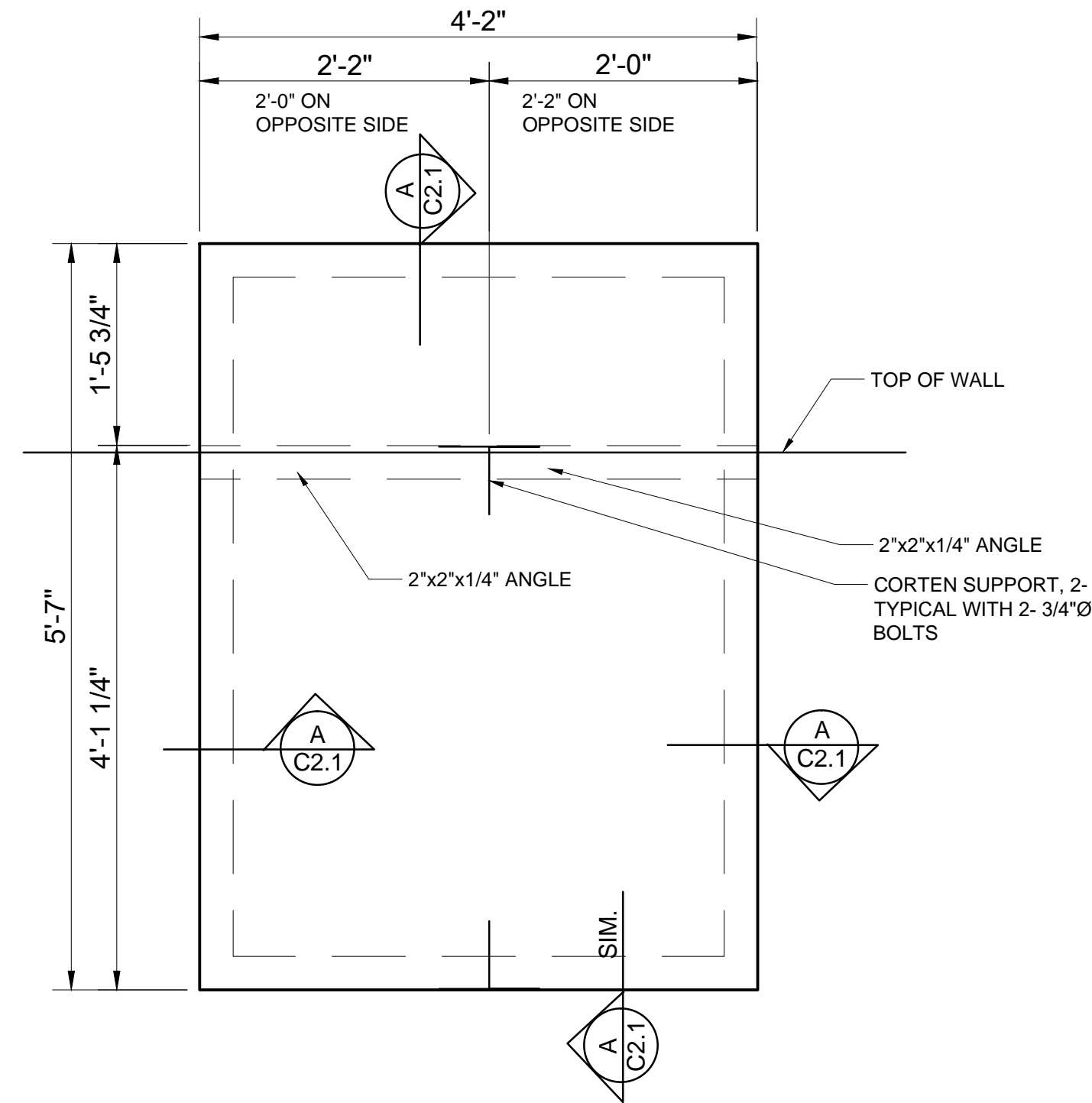


**1**  
C3.0 SIGN ELEVATION

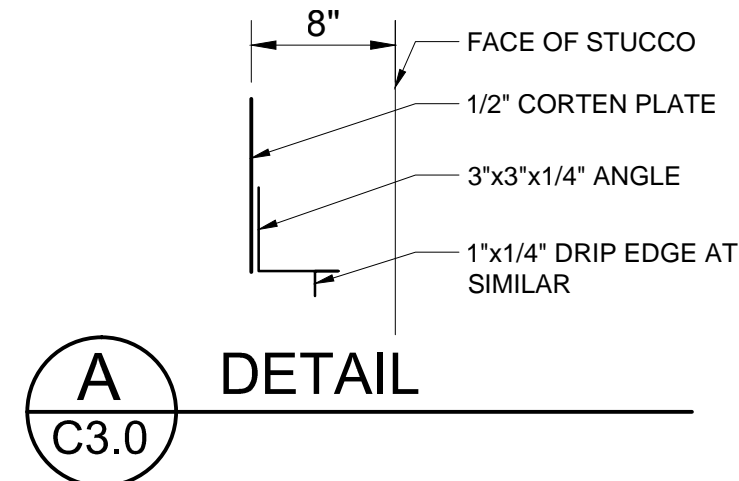
- 1 6" LETTERS (LETTER NOTE 3 SHEET C2.0)
- 2 CORTEN PANEL EACH SIDE
- 3 3" LETTERS AND BULLETS (LETTER NOTE 4 SHEET C2.0)
- 4 STUCCO



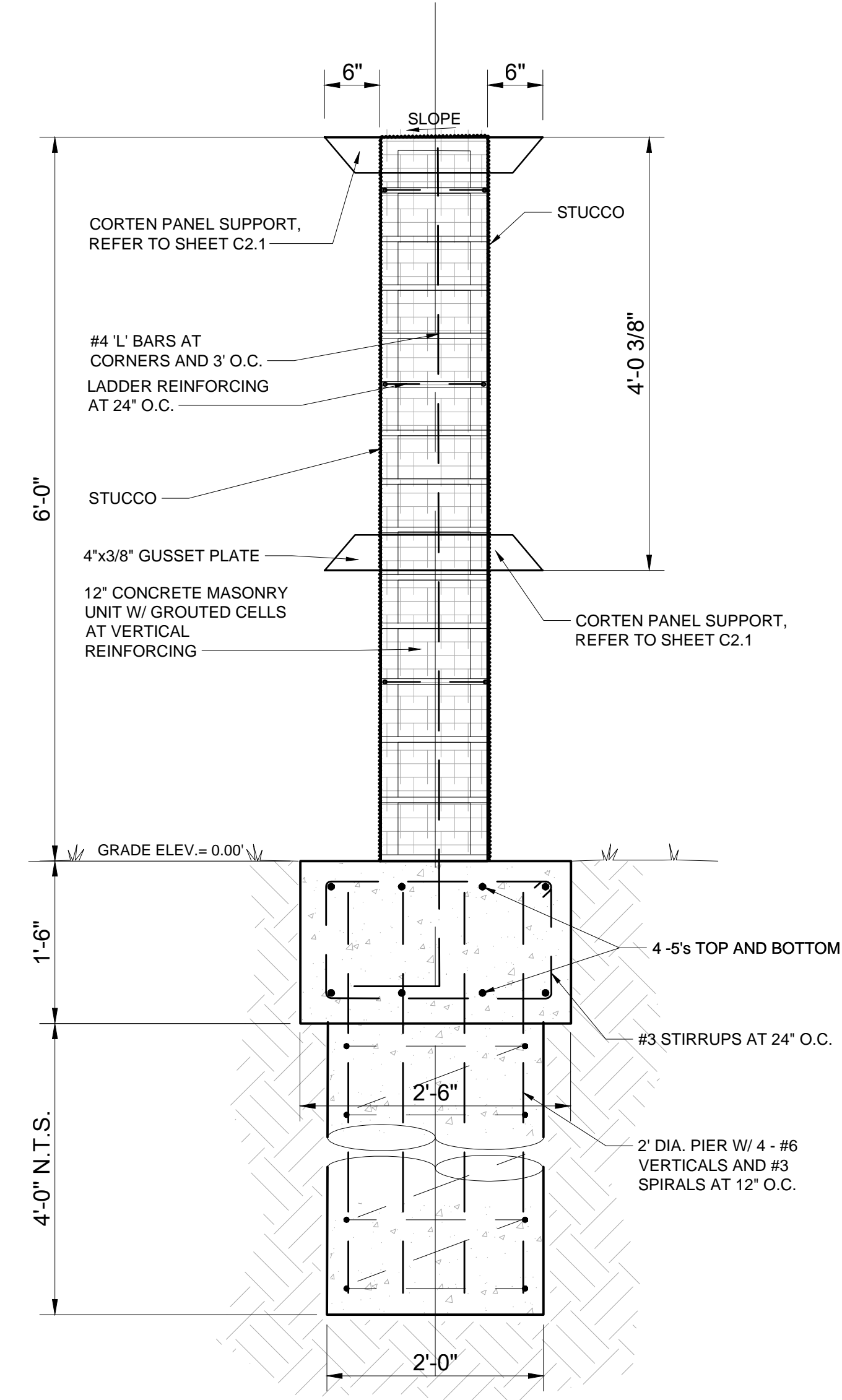
**2**  
C3.0 SIGN PLAN DETAIL



**3**  
C3.0 CORTEN PANEL EACH SIDE



**A**  
C3.0 DETAIL

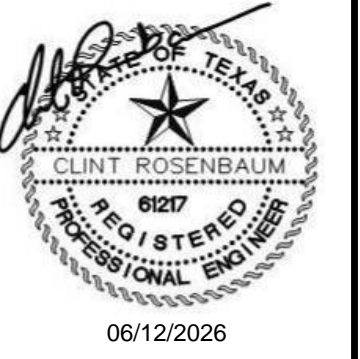


**4**  
C3.0 SIGN WALL DETAIL

REV	DATE	BY	DESCRIPTION
0	06/12/2026	CDR	RELEASED FOR CONSTRUCTION

DESIGNED	CDR	BFT	CDR	CDR	DATE
					3/2026



**Rosenbaum Engineering, PLLC**  
 325.665.2915  
 TBPE Registration #F-19243  
 Abilene, Texas 79606  
 Clint Rosenbaum, P.E. | clint@rosenbaumeng.com

**ACCESS BUSINESS PARK  
 SIGNAGE PLANS  
 HIGHWAY 36 AT F.M. 18  
 ABILENE, TEXAS**

SHEET NO.  
**C3.0**

Q:\UTPL\Rosenbaum\Eng\POA\ASIGN\SIGNS\C3.0\0206.dwg

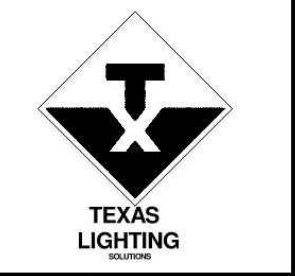


Symbol	Qty	Label	Arrangement	Manufacturer	Description	LLF	Arrangement Luminaire	Arrangement Watts	Total Watts
A-42	1	B	GROUP	DIODE LED	DI-24V-TE-ATX-400-40K-42FT	0.132	111888	193.2	193.2
			Single	USTE dba Vista Professional Outdoor Lighting	1052-X-WF-30-B-MV-ND	0.900	3103	35.57	35.57
B1	1	B1	GROUP	DIODE LED	DI-24V-TE-ATX-400-40K-42FT	0.132	111888	193.2	193.2
			Single	USTE dba Vista Professional Outdoor Lighting	1052-X-NS-30-B-MV-ND	0.900	2561	35.51	35.51

Label	CalcType	Units	Avg	Max	Min	Avg/Min	Max/Min
Sign 1_Top	Illuminance	Fc	28.82	473	0	N.A.	N.A.
Sign 2_Large Area	Illuminance	Fc	23.54	56	5	4.71	11.20
Sign 2_Small Area	Illuminance	Fc	20.04	24	15	1.34	1.60

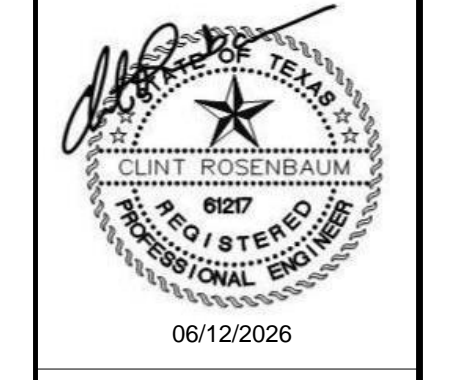
NOTES:  
 1. Type B and B1 setback is 3' from the sign.  
 2. Type B and B1 tilt angle is indicated in drawing.

**GENERAL NOTES**  
 THIS CALCULATION IS BASED ON AN OPEN AREA, OBJECTS AND OBSTRUCTIONS WITHIN THIS AREA WILL AFFECT FINAL LIGHTING LEVELS.  
 THE CALCULATED FOOTCANDLE LEVELS INDICATE LUMINAIRE PERFORMANCE BASED ON THE INFORMATION PROVIDED TO TEXAS LIGHTING SALES, INC. WE MAKE NO CLAIMS OF COMPLIANCE WITH ANY LOCAL OR STATE LIGHTING CODES.  
 CALCULATIONS ARE PROVIDED USING INDUSTRY RECOGNIZED SOFTWARE AND ARE PROVIDED FOR ESTIMATION PURPOSES ONLY. INPUT DATA FOR THE CALCULATIONS CORRESPONDS TO THE INFORMATION PROVIDED TO US. ASSUMPTIONS MAY BE MADE FOR INFORMATION THAT IS NOT PROVIDED. IT IS THE RESPONSIBILITY OF THOSE USING THIS SERVICE TO VERIFY OUR INPUT DATA IS CONSISTENT WITH EXPECTED FIELD CONDITIONS. RESULTS OF THE LIGHTING CALCULATIONS ACCURATELY REFLECT THE INPUT DATA, HOWEVER, ACTUAL LIGHTING LEVELS WILL VARY DEPENDING ON FIELD CONDITIONS SUCH AS ROOM CHARACTERISTICS, TEMPERATURE, VOLTAGE AND LUMINAIRE OUTPUT AND OTHER FACTORS.  
 CALCULATIONS ARE ALSO SUBJECT TO THE LIMITATIONS OF THE SOFTWARE, DATE TO THE ABOVE CONSIDERATIONS.  
 TEXAS LIGHTING SALES CANNOT GUARANTEE THAT ACTUAL LIGHT LEVELS MEASURED IN THE FIELD WILL MATCH OUR INITIAL CALCULATIONS.

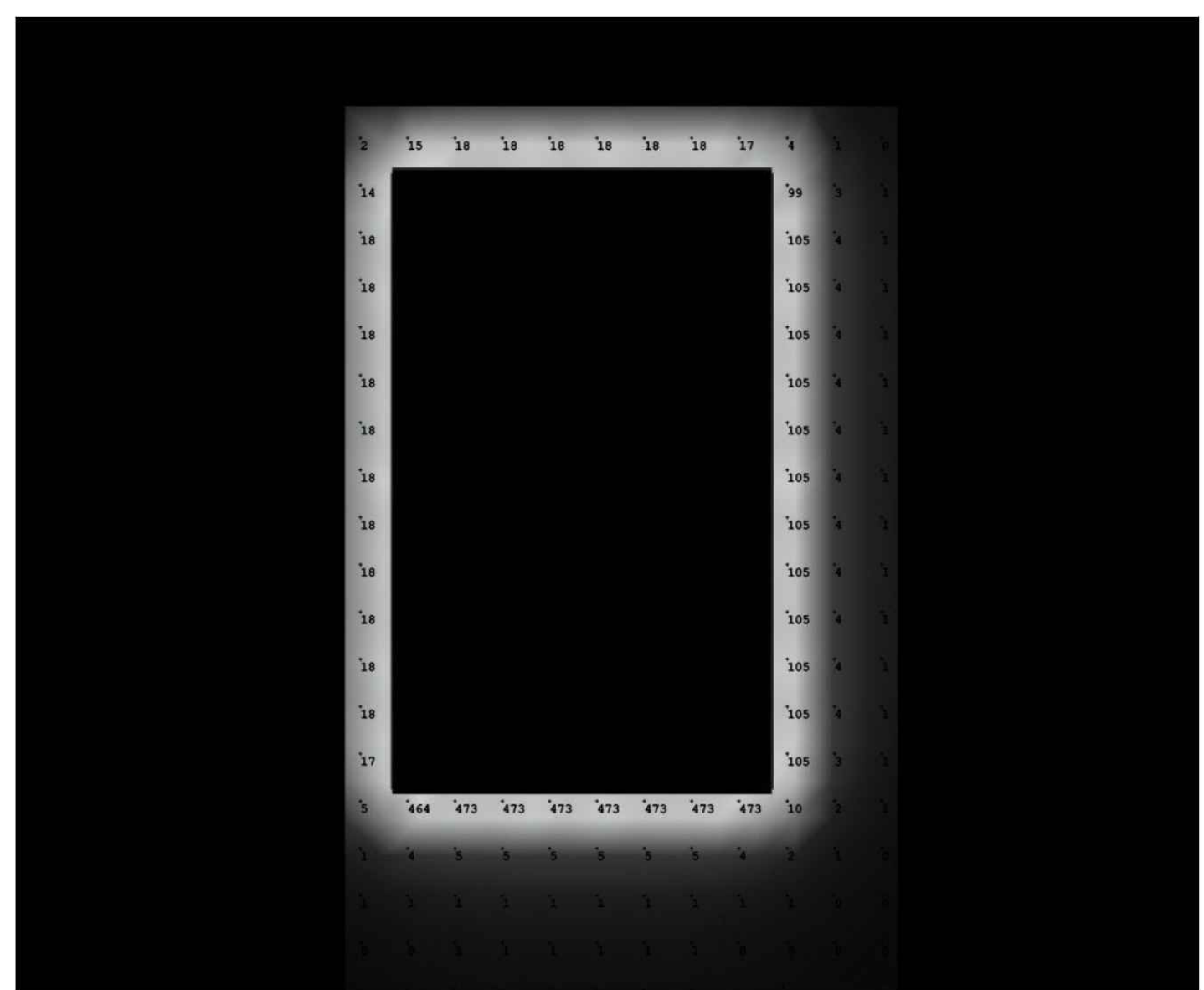


**TEXAS LIGHTING SOLUTIONS**  
 7710 MILWAUKEE AVE., SUITE 700  
 LUBBOCK, TEXAS 79424  
 TEL: 806-745-1083  
 CLIENT: ROSENBAUM ENGINEERING

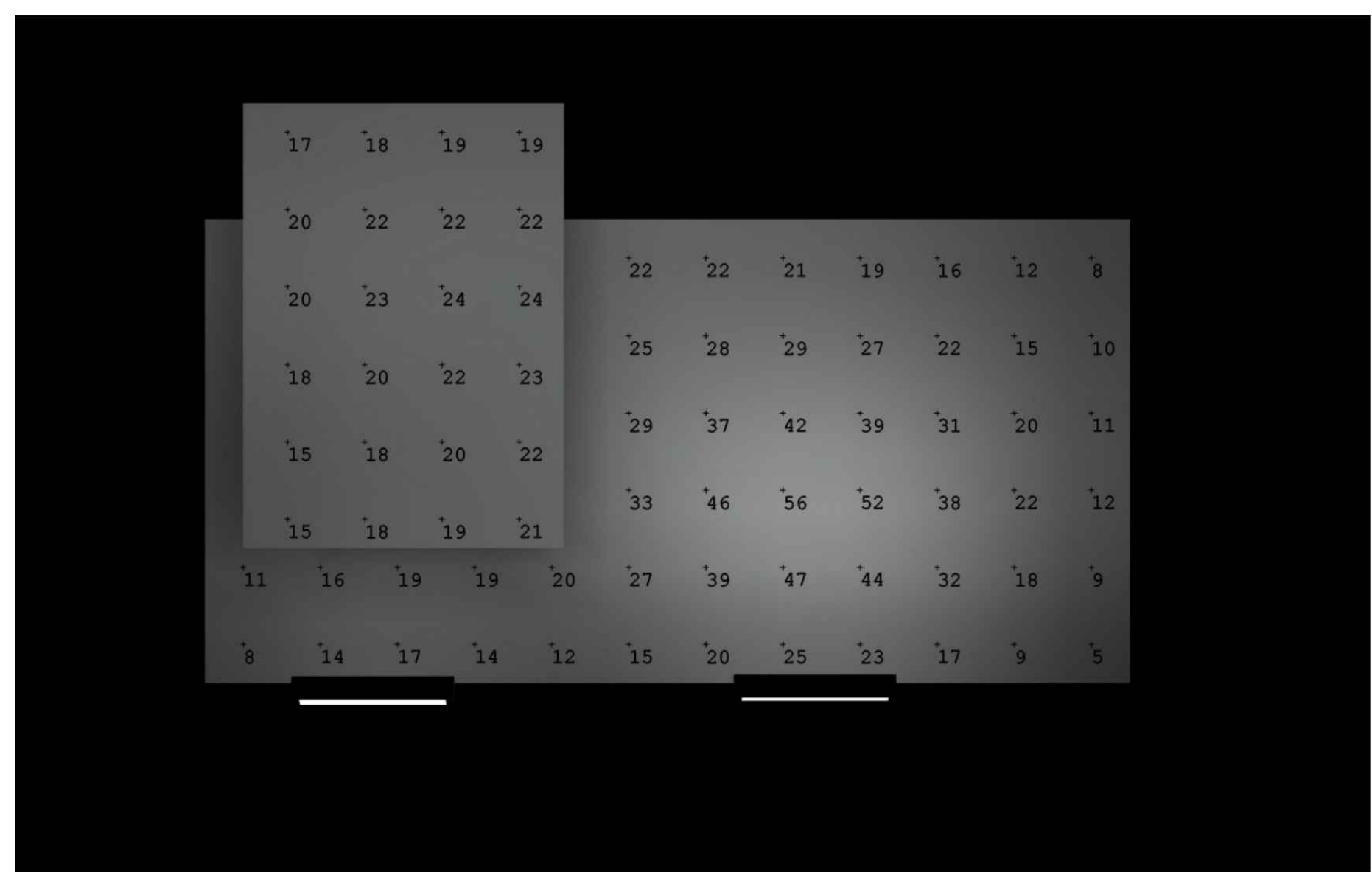
DESIGNED	CDR	DATE	BY	DESCRIPTION
DRAWN	BFT	06/12/2026	CDR	RELEASED FOR CONSTRUCTION
CHECKED	CDR			
APPROVED	CDR			
DATE		3/2026		



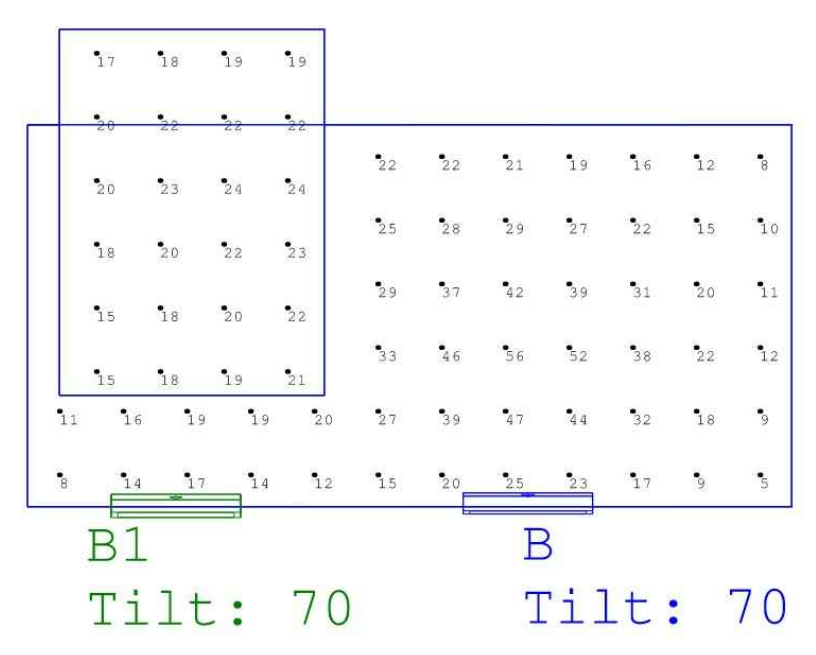
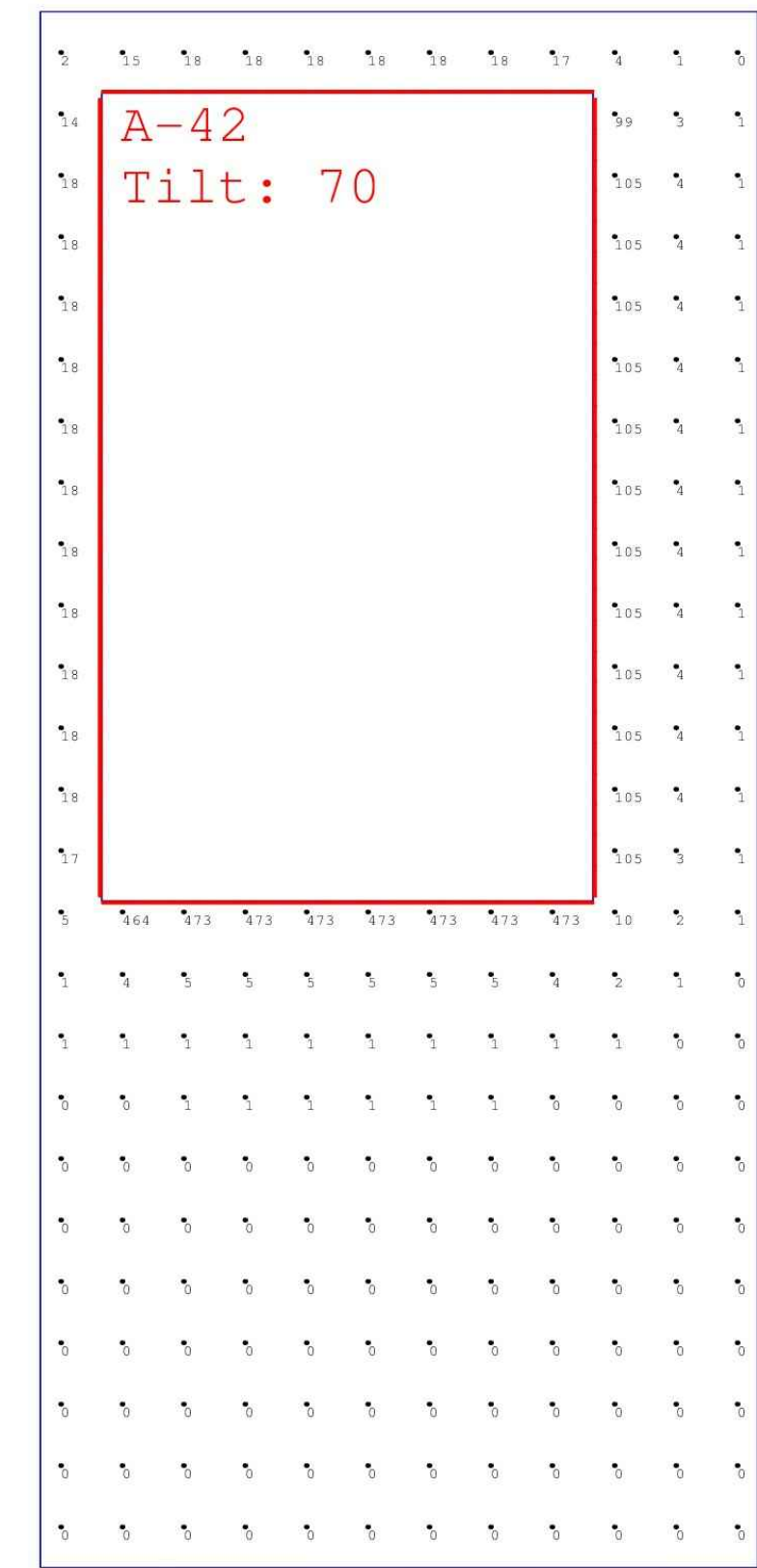
**Rosenbaum Engineering, PLLC**  
 325.665.2915  
 TBPE Registration #F-19243  
 Abilene, Texas 79606  
 Clint Rosenbaum, P.E. | clint@rosenbaumeng.com



SIGN 1



SIGN 2



**LIGHTING NOTES**

- SIGN 1 - CORTEN PANEL BACK LIGHT - DIODELED ALPHATECH X LINEAR LED LIGHTING PER SHEET C4.2 OR SIMILAR.
- SIGN 2 - DIRECTORY SIGN FLOOD LIGHT - VISTA MODEL 1052 PER SHEET C4.2 OR SIMILAR.
- IT IS THE INTENT OF THESE DRAWINGS THAT THE LIGHTING AND ELECTRICAL BE A COMPLETE AND OPERATIONAL INSTALLATION.
- ALL LIGHTING AND ELECTRICAL COMPONENTS SHALL BE SUBMITTED TO THE OWNER FOR APPROVAL.

PHOTOMETRIC PLAN  
 SCALE: 1" = 2'-0"

NO.	REVISION	DATE
1	REV 1	5/6/26
2	REV 2	5/7/26

SCALE: 1" = 2'-0"  
 SHEET SIZE: 24" X 36"  
 JOB NAME: ABILENE ACCESS BUSINESS PARK  
 JOB LOCATION: ABILENE, TX  
 Page Number: 1  
 Date: 5/7/2026

**BUSINESS PARK LIGHTING SPECIFICATIONS**

**ACCESS BUSINESS PARK  
 SIGNAGE PLANS**  
 HIGHWAY 36 AT F.M. 18  
 ABILENE, TEXAS

SHEET NO.  
**C4.1**

Q:\UTPL\rosenbaum\eng\DOCS\SIGNAGE\SKETCHES\A4102606.dwg

**ALPHATECH® X Linear LED Lighting**  
Specification Sheet

**ALPHATECH® X 130/250/400**  
Linear LED Lighting

Full diffusion, precision light quality, and physical durability for reliably beautiful lighting. Suitable for every application, including indoor and outdoor, submerged in water, and in extreme weather conditions. Made in the USA with foreign parts.

**FEATURES**

- Objectively superior CRI, Gamut, and Fidelity
- Seamless end-to-end mounting for limitless linear runs
- Top-bending and side-bending options with multiple output levels
- Stabilized for UV for outdoor use
- IP69 for submersible applications
- UL676 listed for pools, spas, and fountains
- NSF component approved

**ORDERING CODES**

Fixtures built to order

Diode LED	Voltage	Bend Style/Model	CCT	Length	Mounting
DI	24V	TE-ATX-130 (Top Bend) SE-ATX-250 (Side Bend) TE-ATX-400 (Top Bend)	24 (2400K) 27 (2700K) 30 (3000K)	Length (in.) 12 - 192 (in.)	BTCL (Rotating Clip) 90CL (90° Clip) MTCH (Mounting Channel) SPCH (Spine Channel) MTCL (Mounting Clip)

	24V-TE-ATX-130	24V-SE-ATX-250	24V-TE-ATX-400
<b>Voltage</b>	24V	24V	24V
<b>Wattage</b>	1.8W/ft.	5.6W/ft.	4.6W/ft.
<b>2400K</b>	141/ft.	293/ft.	380/ft.
<b>2700K</b>	141/ft.	286/ft.	409/ft.
<b>Lumens 3000K</b>	123/ft.	314/ft.	393/ft.
<b>3500K</b>	133/ft.	320/ft.	410/ft.
<b>4000K</b>	127/ft.	271/ft.	422/ft.
<b>Max Length</b> (With Seamless Interconnection or One Channel)	55 feet	20 feet	30 feet
<b>Max Length</b> (Single Piece)	28.25 feet, Straight Wire Only	16 feet	20 feet, Straight Wire Only
<b>Dimmable</b>	Dim to Dark - see driver options.	Dim to Dark - see driver options.	Dim to Dark - see driver options.
<b>Field Cuttable</b>	No	No	No
<b>Bend Radius</b>	6 in.	6 in.	6 in.
<b>Environment</b>	Outdoor / Wet Location (IP69)	Outdoor / Wet Location (IP69)	Outdoor / Wet Location (IP69)
<b>Ambient Temperature</b>	-4 - 122°F (-20 - 50°C)	-4 - 122°F (-20 - 50°C)	-4 - 122°F (-20 - 50°C)
<b>Ambient Temperature</b> (Deep Cold)	-40°F Min. Luminaire is required to be energized when temperature falls below -4°F.	-40°F Min. Luminaire is required to be energized when temperature falls below -4°F.	-40°F Min. Luminaire is required to be energized when temperature falls below -4°F.
<b>Ambient Temperature</b> (Sweat)	180°F Max, <30% Humidity	180°F Max, <30% Humidity	180°F Max, <30% Humidity
<b>Certification</b>	UL 2108, UL 676 (with Mounting Channel), NSF	UL 2108, UL 676 (with Mounting Channel), NSF	UL 2108, UL 676 (with Mounting Channel), NSF
<b>Warranty</b>	5 Years, 2 Years Deep Cold, 1 Year Sauna	5 Years, 2 Years Deep Cold, 1 Year Sauna	5 Years, 2 Years Deep Cold, 1 Year Sauna

**COLOR VECTOR GRAPHIC**

**BEND OPTIONS**

Specification Sheet | ALPHATECH® X Linear LED Lighting | SS992024 | V2.2  
1 of 5

**ALPHATECH® X Linear LED Lighting**  
Specification Sheet

**ALPHATECH® X 130/250/400**  
Linear LED Lighting

Full diffusion, precision light quality, and physical durability for reliably beautiful lighting. Suitable for every application, including indoor and outdoor, submerged in water, and in extreme weather conditions. Made in the USA with foreign parts.

**MECHANICAL DIAGRAMS**

**ALPHATECH® X**  
Without mounting accessories

**FLAT CLIP (MTCL)**  
Single mounting point

**ROTATING CLIP (RTCL)**  
Single mounting point with adjustability

**90° CLIP (90CL)**  
Single mounting point on ledge or support

**SPINE CHANNEL (SPCH)**  
Mounting along a curve for architectural accents or lighting designs

**MOUNTING CHANNEL - UL676 (MTCH)**  
Straight and right lines of light

**WIRE MANAGEMENT SYSTEM (WMS)**  
Seamless end-to-end mounting of sections of light with concealed wire management, including connections and wire chase capability.

Included with Wire Management System

- (1) 48 inch, White Plastic, Underwire Channel
- (1) 18 inch, White Plastic, End-to-End Joiner
- (1) Underwire Channel Open End Cap
- (1) Underwire Channel Closed End Cap
- (1) Underwire Mounting and Aligning Clip
- (1) Underwire Strain Relief Clip

**CHANNEL LENGTHS (MTCH) / (WMS)**

**CONNECTIONS**

Specification Sheet | ALPHATECH® X Linear LED Lighting | SS992024 | V2.2  
2 of 5

**VISTA MODEL 1052KM | Specification Sheet**  
Commercial Series • Linear Floodlight • LED

TYPE: \_\_\_\_\_ MODEL: \_\_\_\_\_  
PROJECT: \_\_\_\_\_

**PRODUCT FEATURES**

- Wattage: 26 or 35 W
- Voltage: 120 - 277 VAC (208 VAC excluded)
- Lumens: 1821-3690 Delivered Lumens
- Distribution: NEMA type (H x V): 6x6(W), 7x4(W), 6x4(S), 7x5(W), 7x7(W), 7x5(S)
- CCT: 2700K, 3000K, 3500K, 4000K, 5000K
- CRI: 80 CRI min.
- Dimming: 0-10V or Phase Cut (TRAC/ELV-120 VAC only) available
- Driver: Multi-Volt with tri-modal dimming capabilities
- Dimensions: 24 1/2" W x 8 1/2" H x 3" D

**ORDERING INFORMATION**

EXAMPLE: 1052KM-8-MF-27-A-MV-PCT-GS

MODEL	FINISH	DISTRIBUTION	COLOR TEMP	LUMENS	VOLTAGE	DIMMING	ACCESSORIES
1052KM					MV		

MODEL	FINISH	DISTRIBUTION
1052KM	<b>B</b> Black <b>Z</b> Architectural Bronze <b>DZ</b> Dark Bronze <b>GT</b> Granite <b>W</b> White	<b>BR</b> Architectural Brick <b>LZ</b> Light Bronze <b>SB</b> Special Bronze <b>GG</b> Glossy Gray <b>R</b> Rust <b>HG</b> Hunter Green <b>WB</b> Weathered Bronze <b>WI</b> Weathered Iron <b>GM</b> Graphite Metallic

COLOR TEMPERATURE	DELIVERED LUMENS	VOLTAGE	DIMMING	ACCESSORIES
<b>27</b> 2700K <b>30</b> 3000K <b>35</b> 3500K <b>40</b> 4000K <b>50</b> 5000K	<b>A</b> 2000 (min.) <b>B</b> 3000 (min.)	<b>MV</b> Multi-Volt (120 - 277 VAC) (208 VAC excluded)	<b>ND</b> Non Dimming <b>D10</b> 0-10V <b>PCT</b> Phase Cut (TRAC/ELV-120VAC only)	<b>GS</b> Internal Glass Shield <b>VR</b> Polycarbonate Lens

www.VistaPro.com • email@vistapro.com • Fax: (888) 670-VISTA (8478)  
1625 Surveyor Avenue • Simi Valley, CA 93063 • (805) 527-0987 • (800) 766-VISTA (8478)  
Vista Professional Outdoor Lighting reserves the right to modify the design and/or construction of the fixture shown without further notification.

Page 1 of 3  
REV 06.03.25

**BUSINESS PARK MONUMENT SIGN  
CORTEN PANEL BACK LIGHT**

**IDENTIFICATION AND DIRECTORY SIGN  
FLOOD LIGHT**

**BUSINESS PARK LIGHTING SPECIFICATIONS**

DESIGNED: CDR  
DRAWN: BFT  
CHECKED: CDR  
APPROVED: CDR  
DATE: 3/2/2026

DESCRIPTION: RELEASED FOR CONSTRUCTION

REV: 0  
DATE: 06/12/2026

PROFESSIONAL ENGINEER  
CLINT ROSENBAUM  
06/12/2026

**Rosenbaum Engineering, PLLC**  
2326 Wymndham Ct.  
Abilene, Texas 79606  
Clint Rosenbaum, P.E. | clint@rosenbaumeng.com

**ACCESS BUSINESS PARK  
SIGNAGE PLANS**  
HIGHWAY 36 AT F.M. 18  
ABILENE, TEXAS

SHEET NO.  
**C4.2**